

VOLTAGE CONTROLLED OSCILLATOR

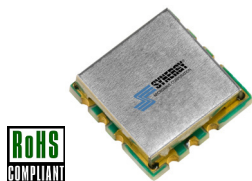
SURFACE MOUNT MODEL: DCO432493-5

OPTIMIZED BANDWIDTH

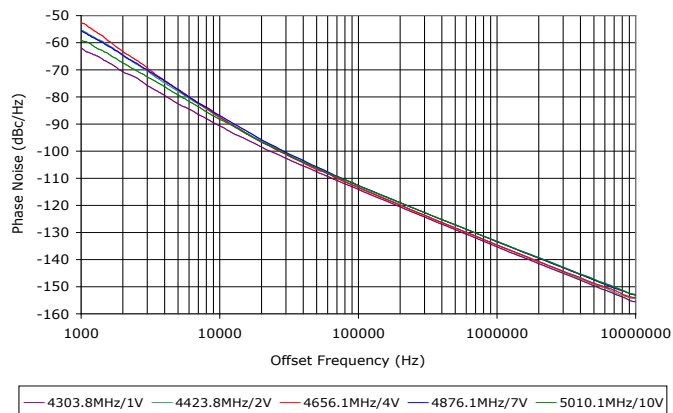
4325 - 5000 MHz

FEATURES:

- ▶ Miniature Size, Surface Mount (0.3" x 0.3")
- ▶ Exceptional Phase Noise Performance
- ▶ Fast Tuning
- ▶ Planar Resonator Construction



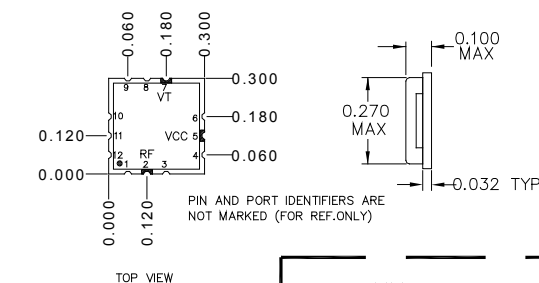
Phase Noise



SPECIFICATIONS (Rev D 01/09/14)

Frequency	4325 - 5000 MHz	
Tuning Voltage	See table below.	
Bias Voltage	+5 VDC @ 21 mA (Max.)	
Output Power	0 dBm (Min.)	
Tuning Sensitivity	40 - 118 MHz/V (Typ.)	
Output Impedance	50 Ohms (Nom.)	
Harmonic Suppression	25 dB (Typ.)	
Frequency Pulling	10 MHz (Typ. @ 1.75:1 VSWR)	
Frequency Pushing	8 MHz/V (Typ.)	
Tuning Port Capacitance	33 pF (Typ.)	
Typical Phase Noise	Offset	dBc/Hz
	10 kHz	-88
	100 kHz	-113
Operating Temperature Range	-40 to +85 °C	

Package # 343

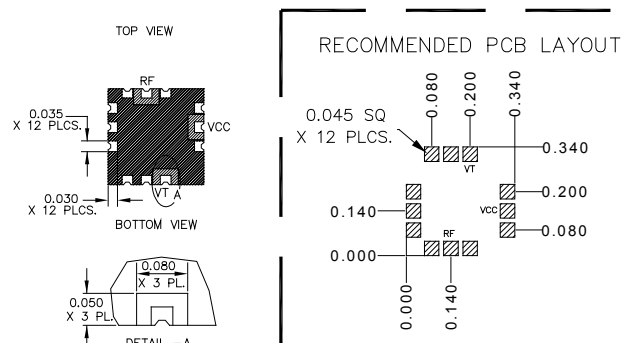


Guaranteed Tuning Specifications

Tuning Voltage (V)	Frequency (MHz)
0.5	4325 (Max.)
5	4680 (Min.)
8	4850 (Min.)
11	4950 (Min.)
12	5000 (Min.)

Absolute Maximum Ratings

Storage Temp. Range	-55 to +125 °C
Bias Voltage	+5.5 V
Tuning Voltage	+15 V
DC Voltage Applied to RF Out	± 25 V



PACKAGE MOUNTING: SEE APPLICATION NOTE AN7300 & AN7302

TOLERANCES ON THREE DECIMAL PLACES = ± 0.015

DIMENSIONS ARE IN INCHES. ALL UNLABELED PINS TO BE GROUNDING.

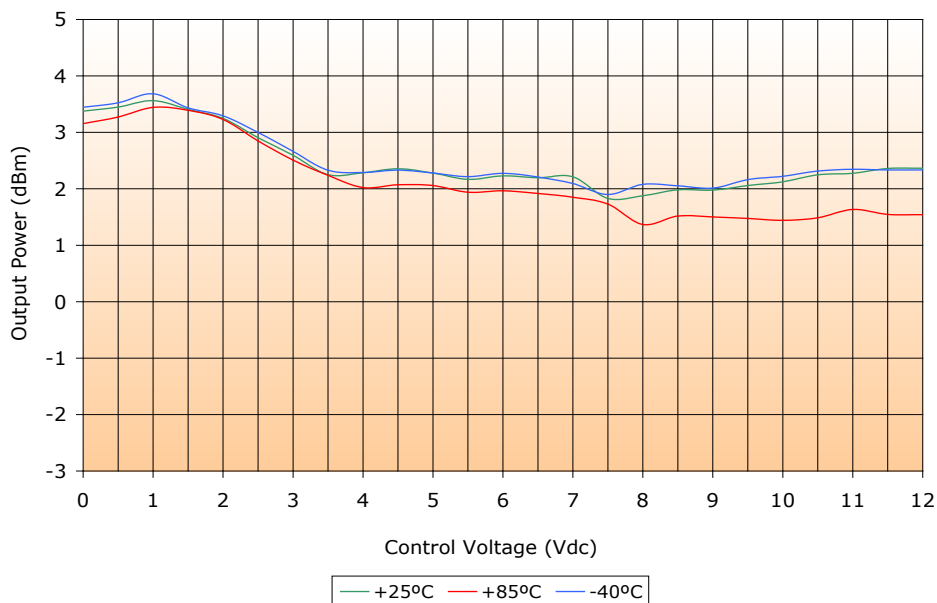
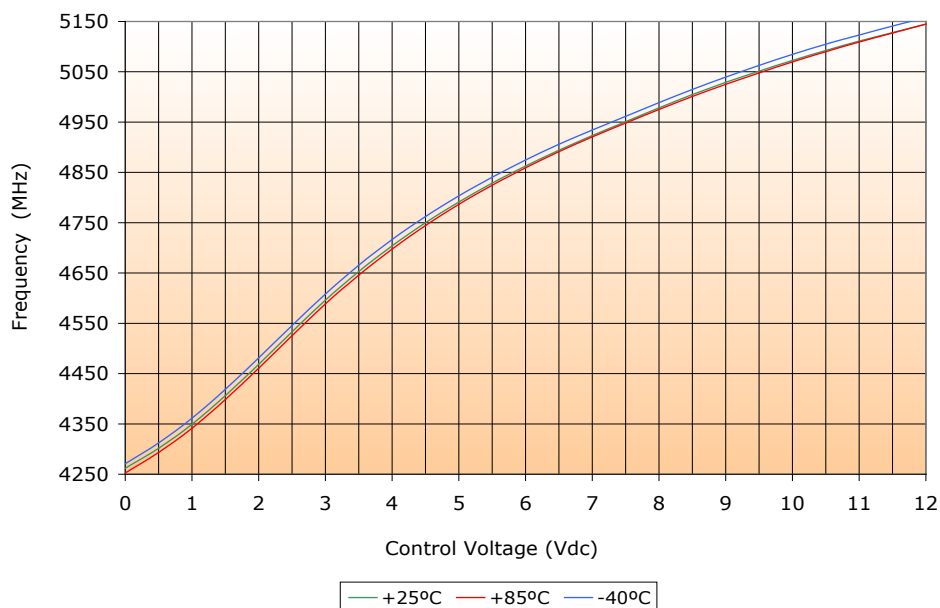
VOLTAGE CONTROLLED OSCILLATOR

SURFACE MOUNT MODEL: DCO432493-5

OPTIMIZED BANDWIDTH

4325 - 5000 MHz

PERFORMANCE PLOTS



VOLTAGE CONTROLLED OSCILLATOR

SURFACE MOUNT MODEL: DCO432493-5

OPTIMIZED BANDWIDTH

4325 - 5000 MHz

PERFORMANCE PLOTS

