

# BI-DIRECTIONAL COUPLER

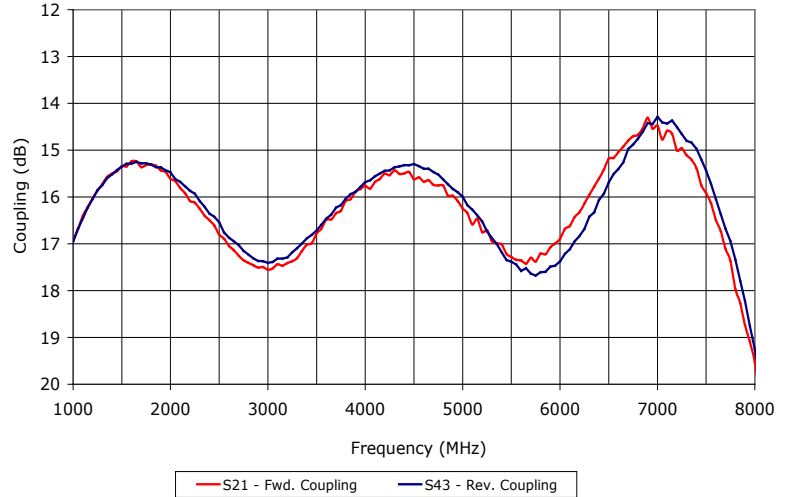
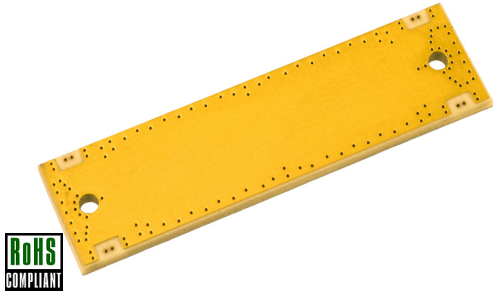
## SYNSTRIP® MODEL: SCS100800-16

WIDE BANDWIDTH

1000 - 7800 MHz

**FEATURES:**

- ▶ SYNSTRIP® Technology
- ▶ Small Size, Surface Mount
- ▶ Optimum Performance



**SPECIFICATIONS (Rev. B 12/20/10)**

<b>Frequency</b>	1000 - 7800 MHz		
<b>Coupling</b>	16.8 dB ±1.5 dB (Nom.)		
<b>Coupling Flatness</b>	±2.8 dB (Max.)		
<b>Mainline Loss (dB)</b>	Typ.	Max.	
	0.7	1.0	
<b>Directivity (dB)</b>	Freq. (MHz)	Typ.	Min.
	1000 - 4000	18	12
	4000 - 7800	14	5
<b>Input Power Rating</b>	25 Watts (Avg.)		

<b>Impedance</b>	50 Ohms (Nom.)
<b>VSWR</b>	1.3:1 (Typ.)
<b>Operating Temperature Range</b>	-40 to +85 °C
<b>Storage Temperature Range</b>	-55 to +100 °C

# BI-DIRECTIONAL COUPLER

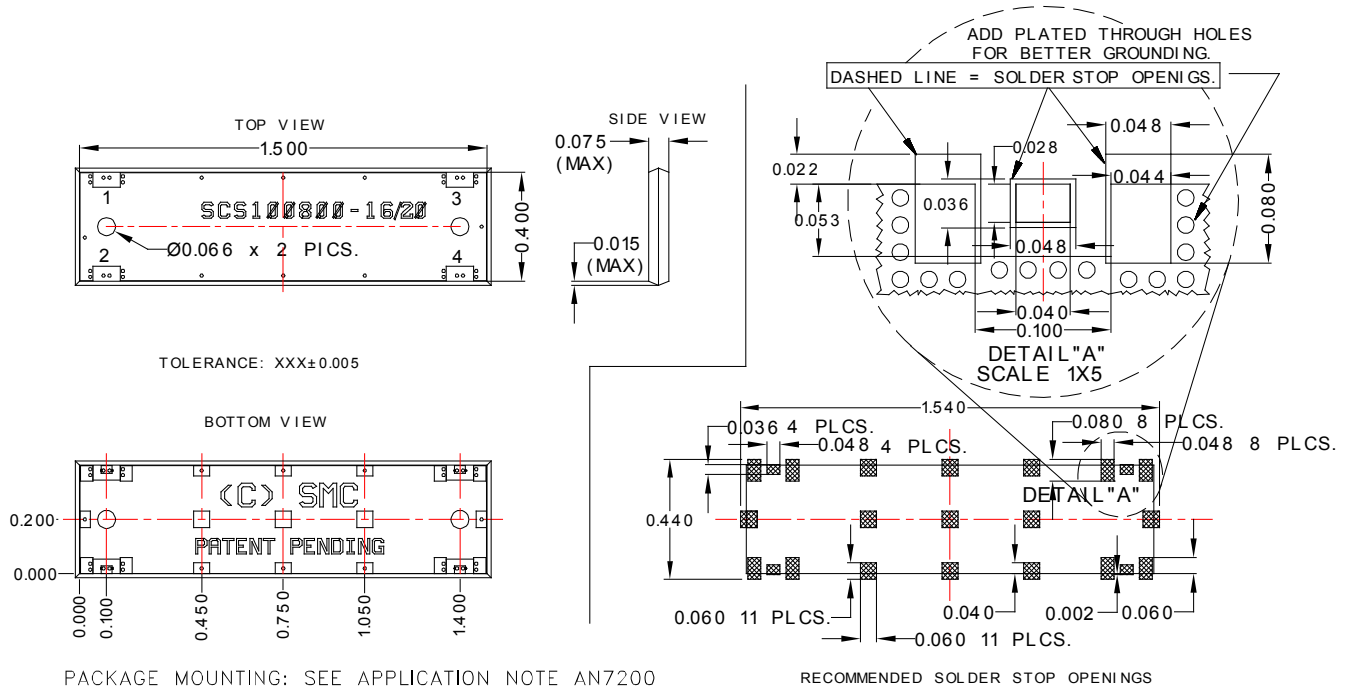
## SYNSTRIP® MODEL: SCS100800-16

**WIDE BANDWIDTH**

**1000 - 7800 MHz**

Package # 321

REL-PRO® PATENT NO. 7,612,296



PACKAGE MOUNTING: SEE APPLICATION NOTE AN7200

RECOMMENDED SOLDER STOP OPENINGS

### PORT CONFIGURATION

In \ Out	1	2	3	4
1		Coupled	Thru	Iso
2	Coupled		Iso	Thru
3	Thru	Iso		Coupled
4	Iso	Thru	Coupled	

\* For directional coupler operation, connect 50 Ohms load from isolated port to ground.

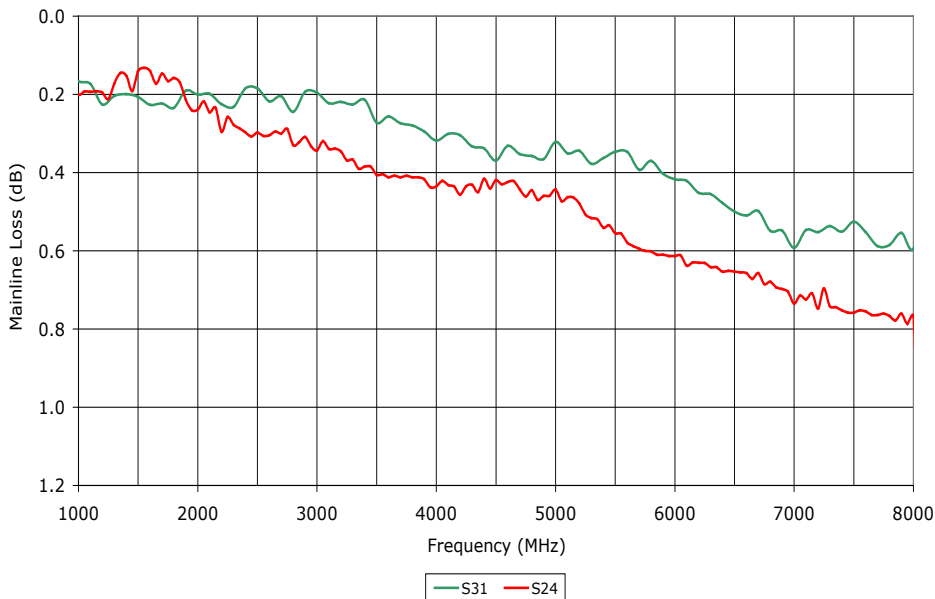
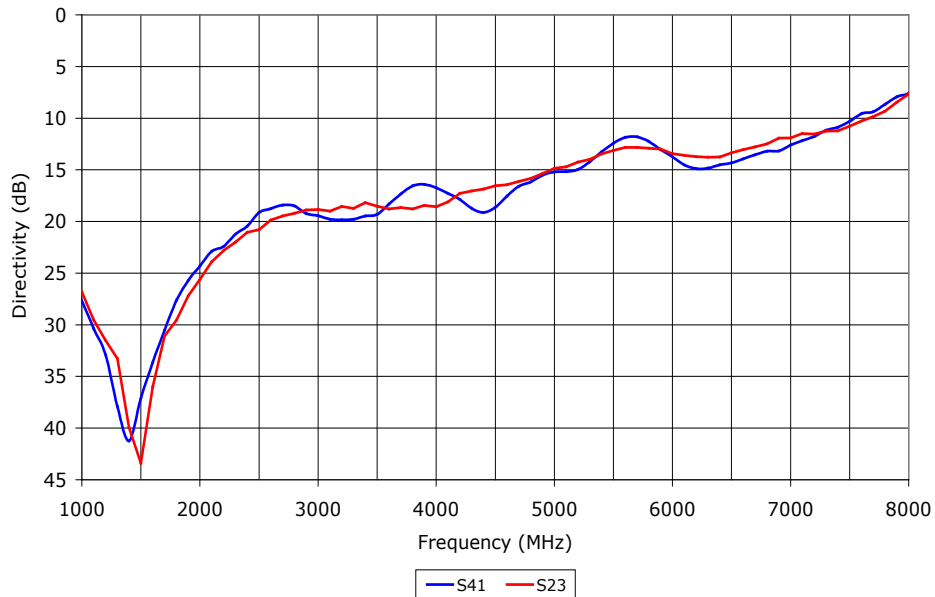
# BI-DIRECTIONAL COUPLER

## SYNSTRIIP<sup>®</sup> MODEL: SCS100800-16

WIDE BANDWIDTH

1000 - 7800 MHz

Data @ 25 °C



PERFORMANCE PLOTS



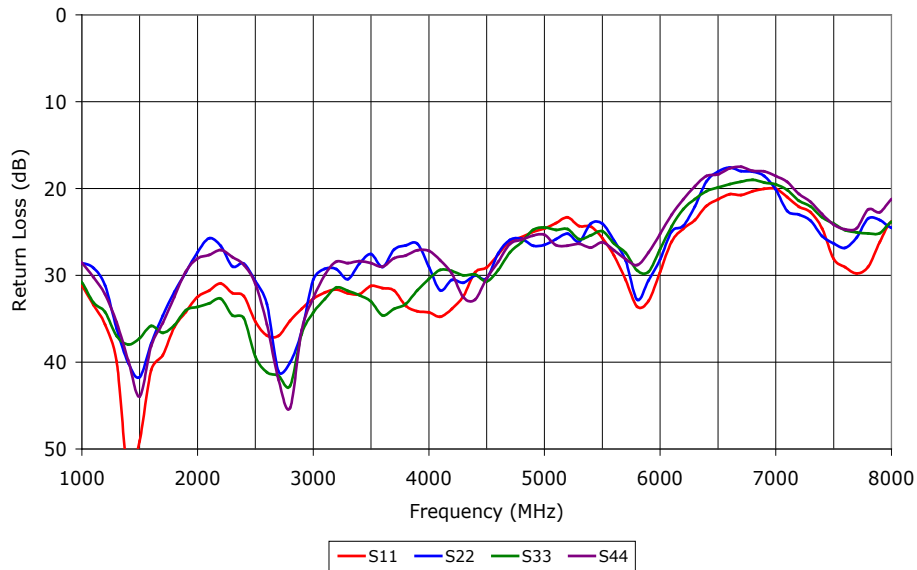
# BI-DIRECTIONAL COUPLER

## SYNSTRIIP<sup>®</sup> MODEL: SCS100800-16

WIDE BANDWIDTH

1000 - 7800 MHz

Data @ 25 °C



PERFORMANCE PLOTS

