

# TRIPLE-BALANCED MIXER

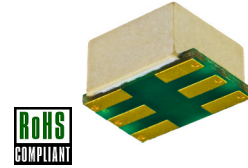
## SURFACE MOUNT MODEL: SLD-K5

WIDE BANDWIDTH

5 - 1000 MHz

**FEATURES:**

- ▶ Multi-Octave Bandwidth
- ▶ Schottky Diode Mixer
- ▶ Low Conversion Loss
- ▶ High Interport Isolation
- ▶ Small Size, Surface Mount
- ▶ Lead Free Patented REL-PRO® Technology



**SPECIFICATIONS (Rev. D 09/18/18)**

<b>Frequency</b>	LO/RF (MHz)	IF (MHz)	
	5 - 1000	5 - 1000	
<b>Conversion Loss (dB)</b>	Freq. (MHz)	Typ.	Max.
	10 - 500	6.5	8.0
	5 - 1000	7.5	9.5
<b>Isolation (dB)</b>	Freq. (MHz)	LO/RF (Typ.)	LO/IF (Max.)
	5 - 50	35/20	30/20
	50 - 500	40/30	30/20
	500 - 1000	30/23	25/20
<b>LO Power</b>	+10 dBm (Nom.)		
<b>1 dB Comp. Pt.</b>	+5 dBm (Typ.)		
<b>Input IP<sup>3</sup></b>	+18 dBm (Typ.)		
<b>Impedance</b>	50 Ohms (Nom.)		
<b>Operating Temperature Range</b>	-20 to +70 °C		

<b>Package #</b>	159LF		
------------------	-------	--	--

**REL-PRO® PATENT NO. 7,612,296**

TOLERANCES ON THREE DECIMAL PLACES= ± 0.015  
PACKAGE MONTING: SEE APPLICATION NOTES AN7200 & AN7301

PORT DESIGNATION			
RF	LO	IF	GND
4	1	5	All Others

# TRIPLE-BALANCED MIXER

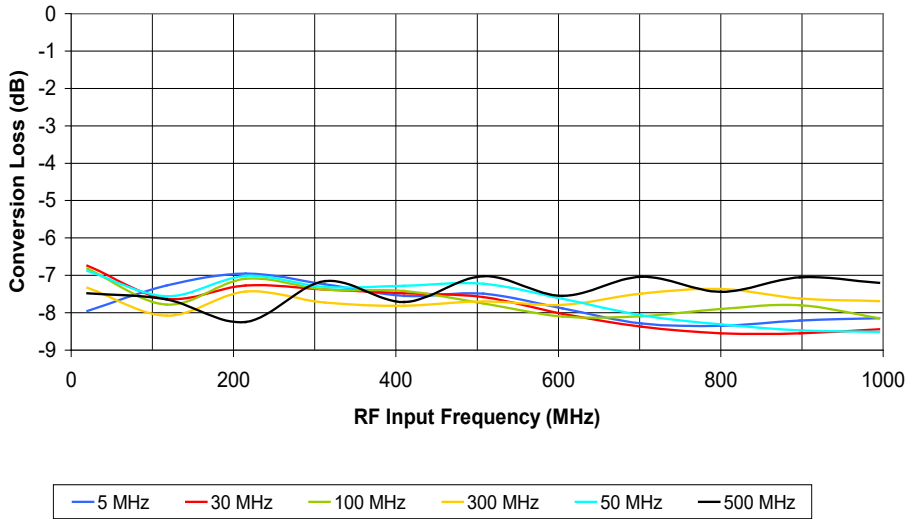
## SURFACE MOUNT MODEL: SLD-K5

WIDE BANDWIDTH

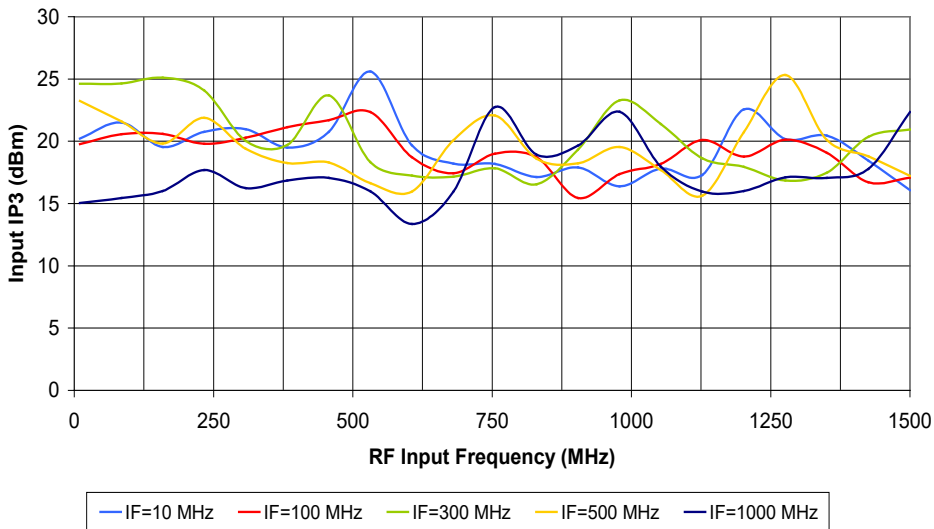
5 - 1000 MHz

PERFORMANCE PLOTS

LO=+10 dBm, RF=0 dBm, IF=LO-RF



LO=+10 dBm, RF=-10 dBm, IF=LO-RF



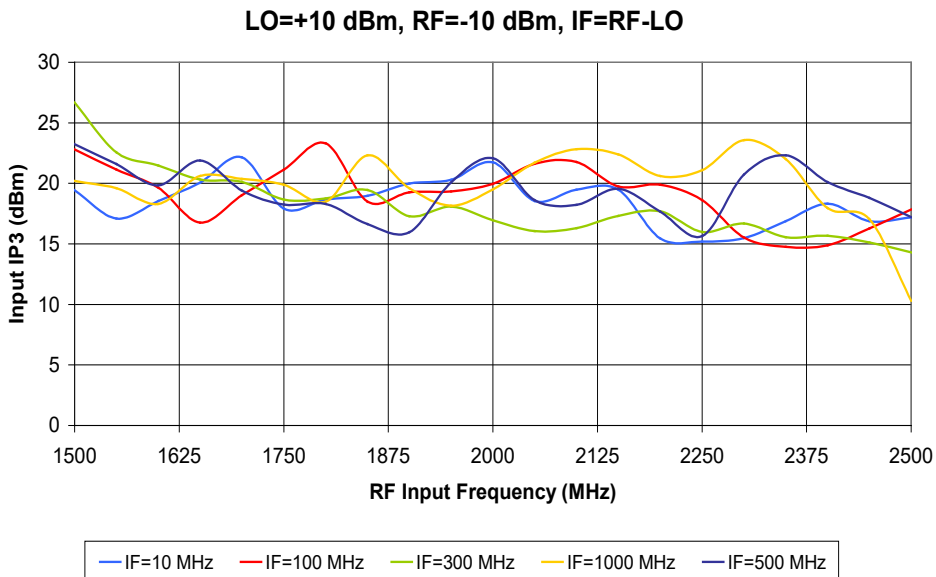
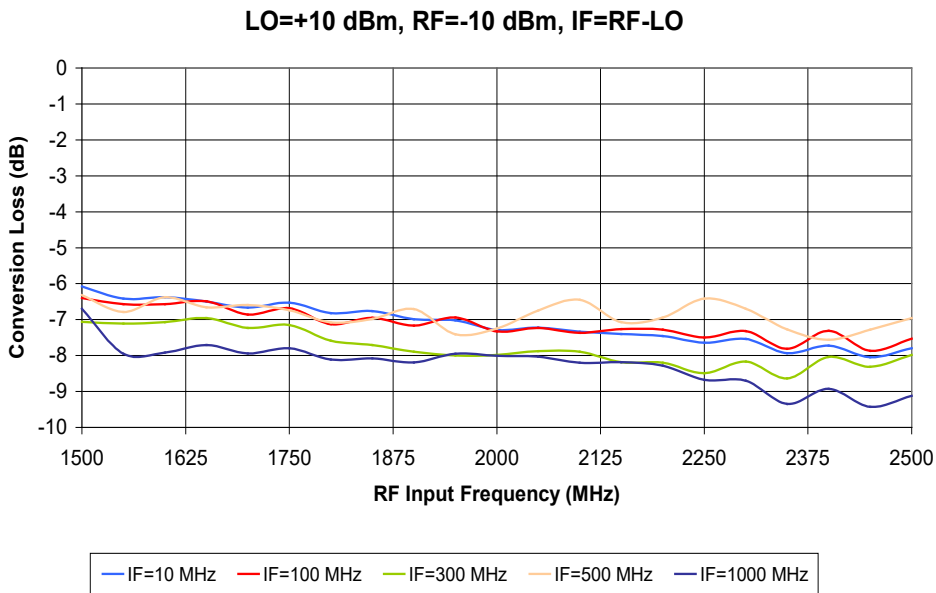
# TRIPLE-BALANCED MIXER

## SURFACE MOUNT MODEL: SLD-K5

WIDE BANDWIDTH

5 - 1000 MHz

PERFORMANCE PLOTS



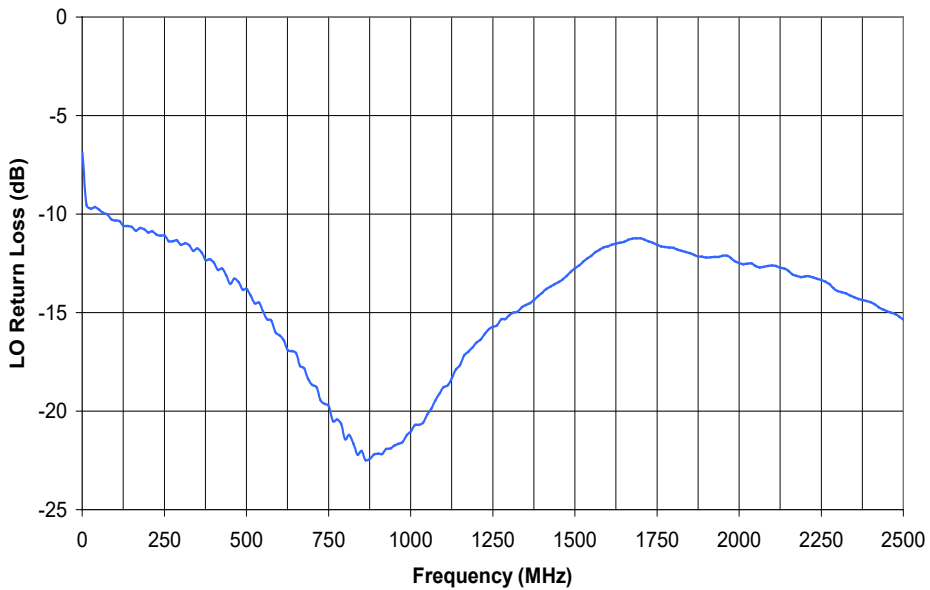
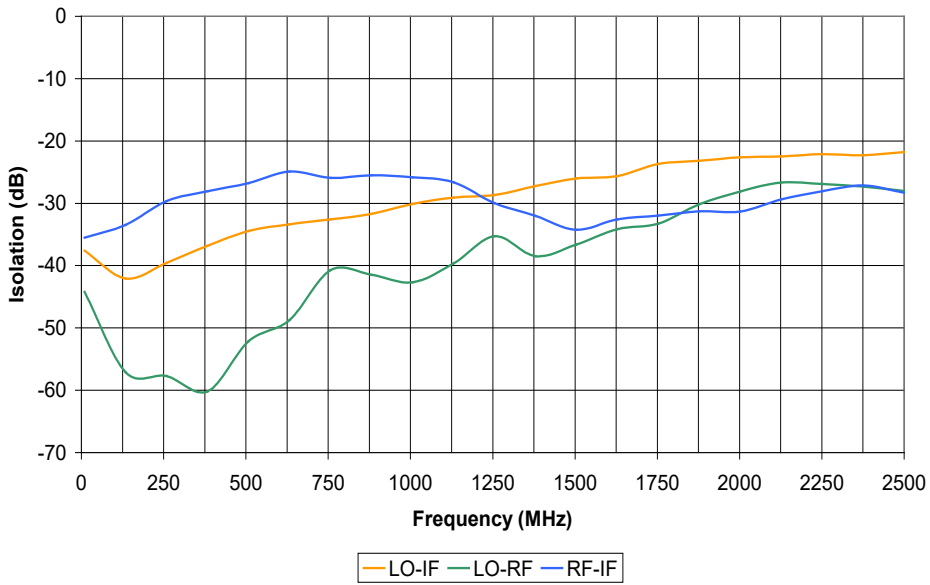
# TRIPLE-BALANCED MIXER

## SURFACE MOUNT MODEL: SLD-K5

WIDE BANDWIDTH

5 - 1000 MHz

PERFORMANCE PLOTS



# TRIPLE-BALANCED MIXER

## SURFACE MOUNT MODEL: SLD-K5

WIDE BANDWIDTH

5 - 1000 MHz

PERFORMANCE PLOTS

