

2-WAY POWER DIVIDER/COMBINER

CONNECTORIZED MODEL: CSBK260S

WIDE BANDWIDTH

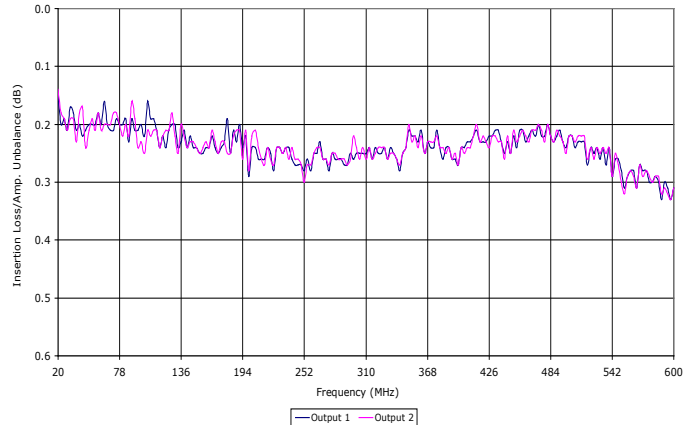
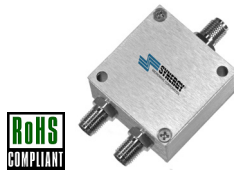
20 - 600 MHz

FEATURES:

- ▶ Excellent Performance
- ▶ Low Power

APPLICATIONS:

- ▶ Signal Splitting & Low Power Combining



SPECIFICATIONS (Rev D 06/29/23)

Frequency	20 - 600 MHz		
Insertion Loss (dB) ¹	Frequency (MHz)	Typ.	Max.
	20 - 40	0.25	0.35
	40 - 300	0.36	0.45
	300 - 600	0.40	0.75
Isolation (dB)	Frequency (MHz)	Typ.	Min.
	20 - 40	23	20
	40 - 300	25	20
	300 - 600	23	20
Phase Unbalance (Deg.)	Frequency (MHz)	Typ.	Max.
	20 - 40	0.5	2.0
	40 - 300	0.8	2.0
	300 - 600	0.8	3.0
Amplitude Unbalance (dB)	Frequency (MHz)	Typ.	Max.
	20 - 40	0.05	0.20
	40 - 300	0.05	0.20
	300 - 600	0.05	0.20
VSWR	1.15:1 (Typ.) / 1.40:1 (Max.)		
Combined Power @ Port 1 ²	50 Watt (CW)		
Operating Temperature Range	-40 to +85 °C		

¹ Insertion loss is above the theoretical 3.0 dB splitting loss.
² Handling power assumes ideal 50 Ohms impedance matching on all ports.
 Maximum power for combined inputs 25 Watts/Input

Package # 437

All Dimensions in inches (mm)

Tolerances:
 2 PL. ±0.030 inch. (0.762mm)
 3 PL. ±0.015 inch. (0.381mm)

Dimensions:
 A - 1.250 inch. (31.75 mm)
 B - 1.250 inch. (31.75 mm)
 C - 0.750 inch. (19.05 mm)
 D - 0.375 inch. (9.525 mm)
 E - 1.000 inch. (25.4 mm)
 F - 1.000 inch. (25.4 mm)
 G - ∅0.136 inch. (3.45 mm)
 H - 0.625 inch. (15.875 mm)
 I - 0.600 inch. (15.260 mm)

Port Configuration	
Sum Port	Input / Output
1	2,3

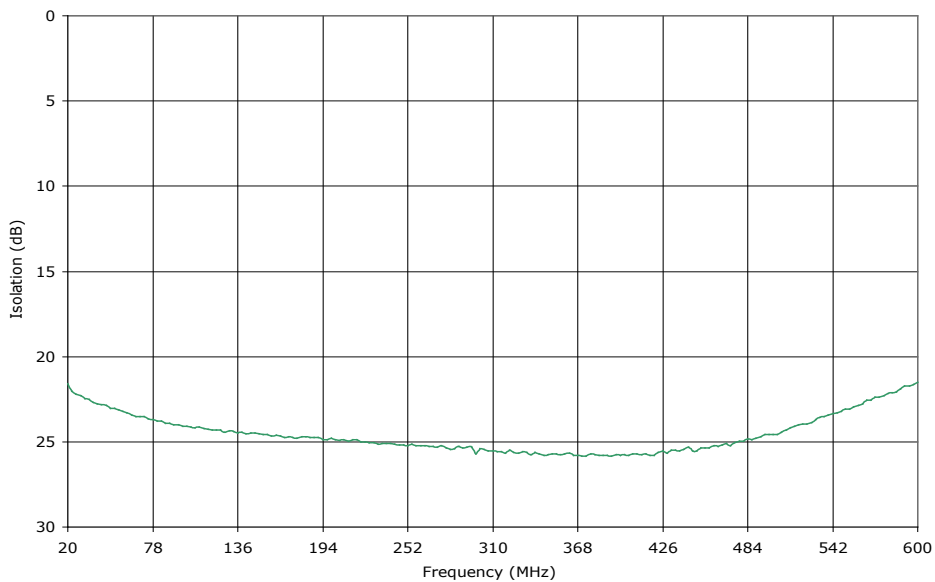
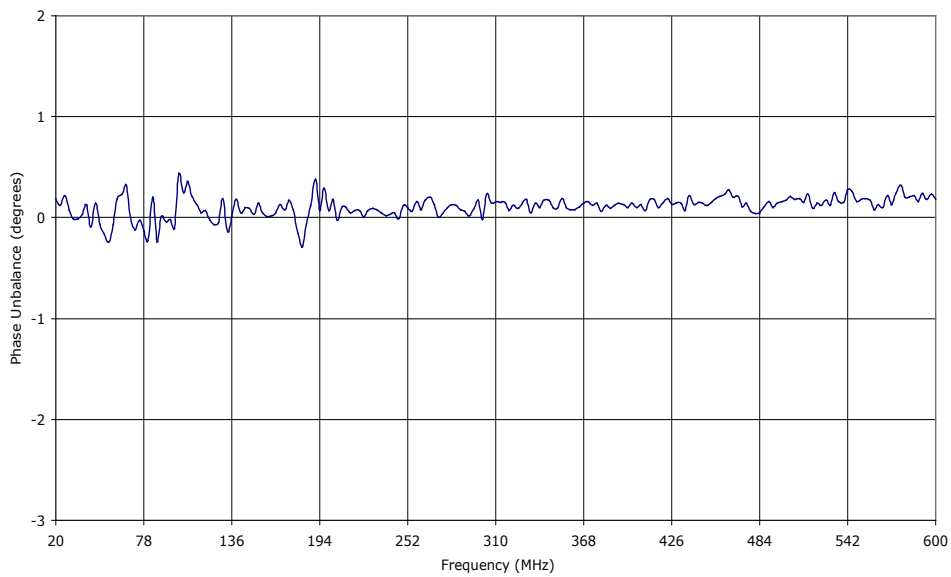
2-WAY POWER DIVIDER/COMBINER

CONNECTORIZED MODEL: CSBK260S

WIDE BANDWIDTH

20 - 600 MHz

Data @ 25 °C



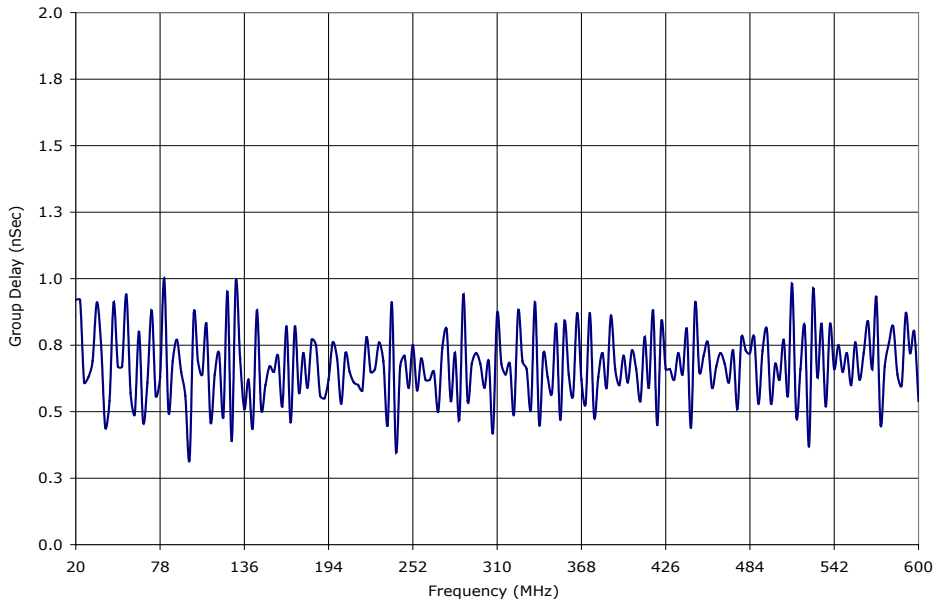
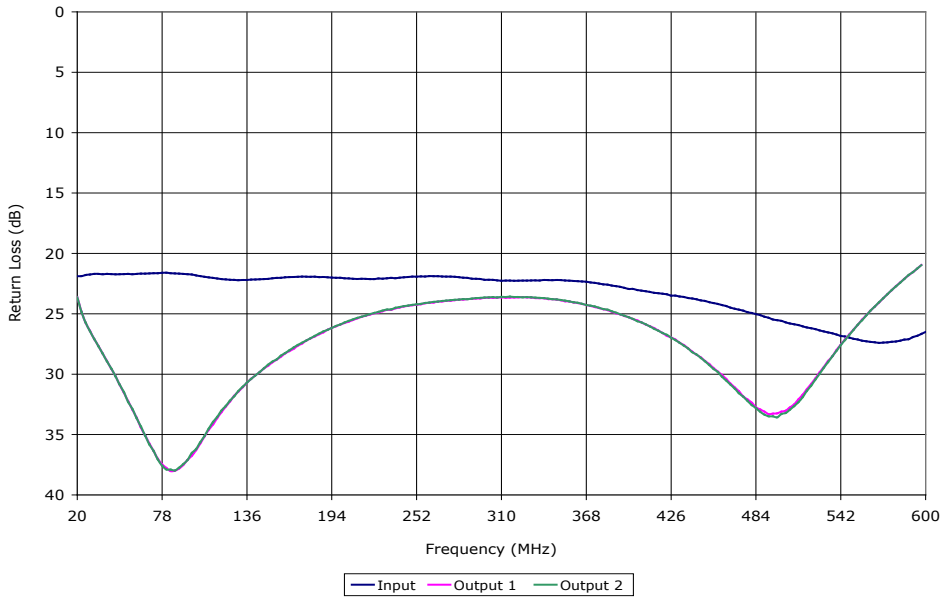
PERFORMANCE PLOTS

2-WAY POWER DIVIDER/COMBINER CONNECTORIZED MODEL: CSBK260S

WIDE BANDWIDTH

20 - 600 MHz

Data @ 25 °C



PERFORMANCE PLOTS