

6-WAY POWER DIVIDER

SURFACE MOUNT MODEL: DFS-9B1

WIDE BANDWIDTH

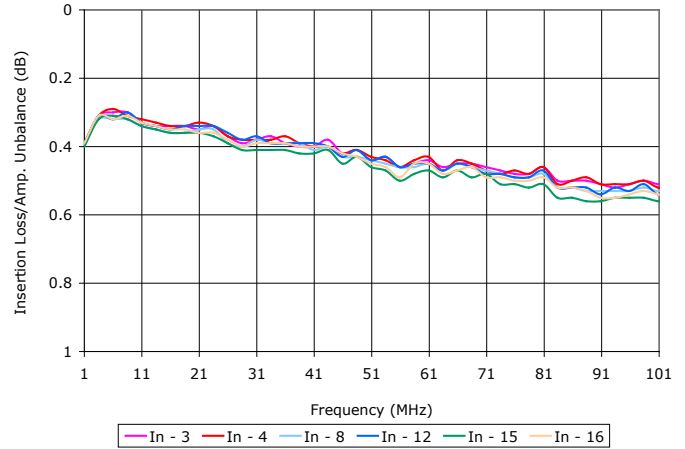
1 - 100 MHz

FEATURES:

- ▶ Excellent Performance
- ▶ Wide Bandwidth
- ▶ Small Size, Surface Mount
- ▶ Moderate Power
- ▶ Lead Free RoHS Compliant

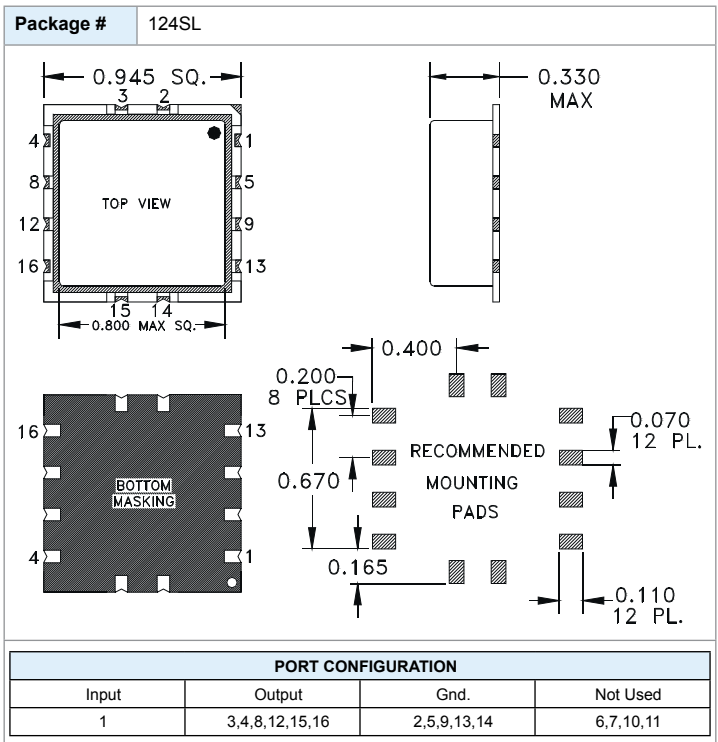
APPLICATIONS:

- ▶ Signal Splitting & Low Power Combining



SPECIFICATIONS (Rev. B 10/09/08)

Frequency	1 - 100 MHz		
Insertion Loss (dB) *	Freq. (MHz)	Typ.	Max.
	1 - 10	0.3	0.6
	10 - 50	0.4	0.7
Isolation (dB)	Freq. (MHz)	Typ.	Min.
	1 - 10	30	25
	10 - 50	30	25
Phase Unbalance	Freq. (MHz)	Typ.	Max.
	1 - 10	0.5	1°
	10 - 50	0.5	2°
Amplitude Unbalance (dB)	Freq. (MHz)	Typ.	Max.
	1 - 10	0.05	0.2
	10 - 50	0.05	0.3
Input Power **	1 Watt (Max.)		
	VSWR		
	1.2:1 (Typ.)		
Impedance			
50 Ohms (Nom.)			
Operating Temperature Range			
-40 to +85 °C			
* Above 7.78 dB theoretical split loss.			
** Handling power applies to splitter mode and assumes ideal 50 Ohms impedance matching on all ports.			



6-WAY POWER DIVIDER

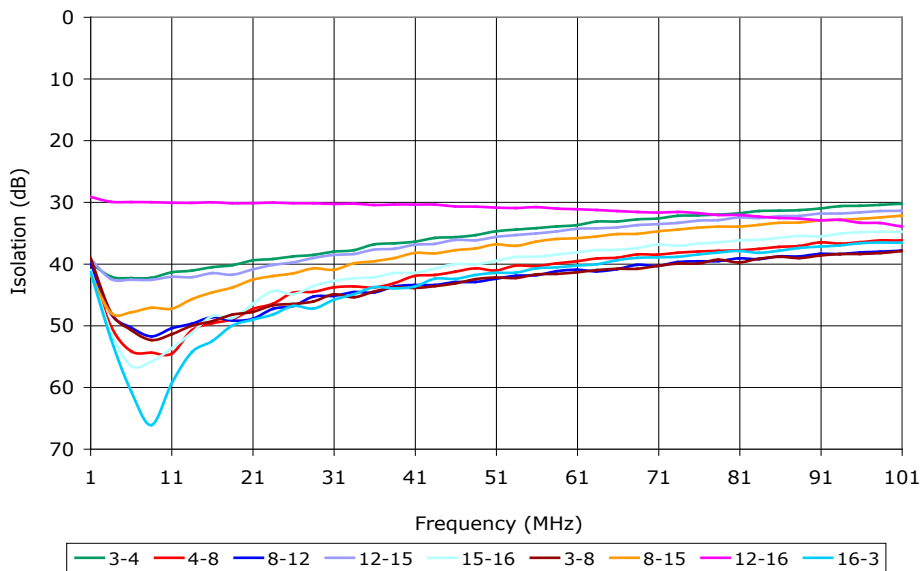
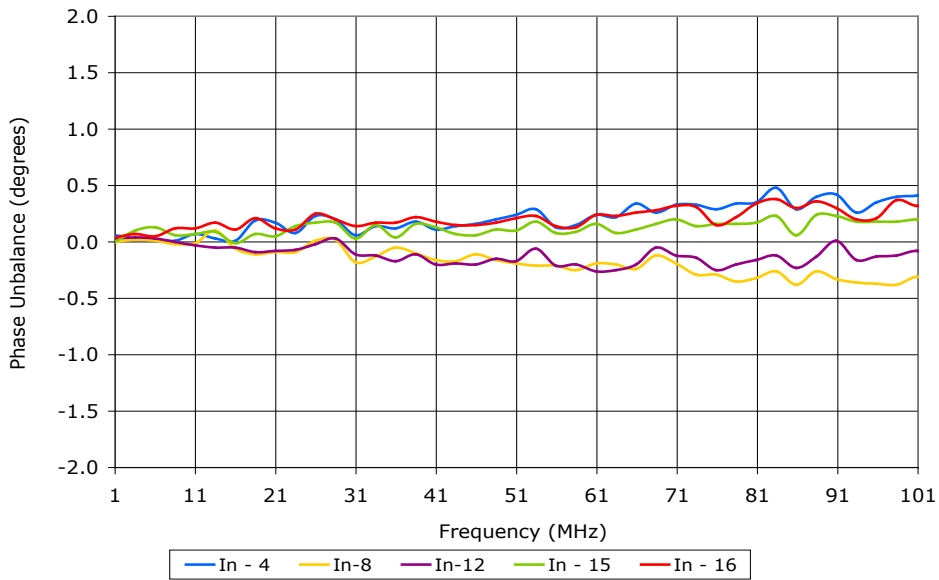
SURFACE MOUNT MODEL: DFS-9B1

WIDE BANDWIDTH

1 - 100 MHz

DATA @ 25°C

PERFORMANCE PLOTS



6-WAY POWER DIVIDER

SURFACE MOUNT MODEL: DFS-9B1

WIDE BANDWIDTH

1 - 100 MHz

DATA @ 25°C

PERFORMANCE PLOTS

