

2-WAY POWER DIVIDER

CONNECTORIZED MODEL: DSK-729S

WIDE BANDWIDTH

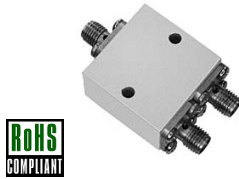
800 - 2200 MHz

FEATURES:

- ▶ Excellent Performance
- ▶ Moderate Power

APPLICATIONS:

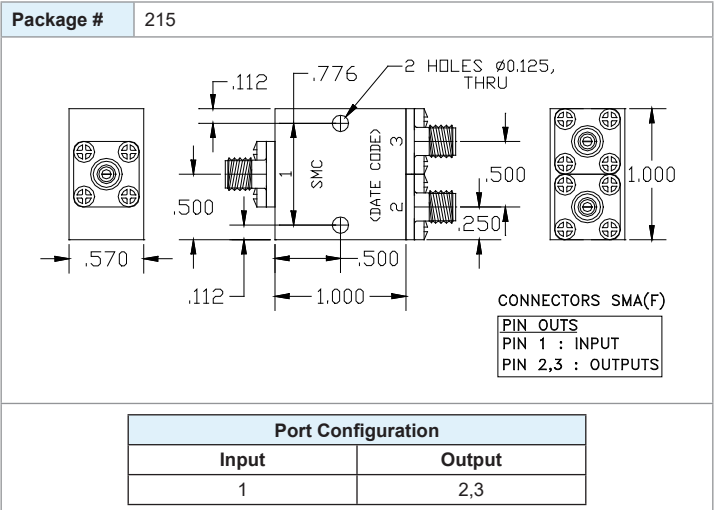
- ▶ Signal Splitting & Low Power Combining



SPECIFICATIONS (Rev. A 03/04/19)

Frequency	800 - 2200 MHz	
Insertion Loss (dB) ¹	Typ.	Max.
	0.4	0.5
Isolation (dB)	Typ.	Min.
	22	20
Phase Unbalance (Deg.)	Typ.	Max.
	--	2.0
Amplitude Unbalance (dB)	Typ.	Max.
	--	0.4
VSWR	Input	1.5:1 (Typ.)
	Output	1.3:1 (Max.)
Input Power ²	10 Watt (Max.)	
Impedance	50 Ohms (Nom.)	
Operating Temperature Range	-55 to +85 °C	

¹ Insertion loss is above the theoretical 3.0 dB splitting loss.
² Handling power applies to splitter mode and assumes ideal 50 Ohms impedance matching on all ports.



2-WAY POWER DIVIDER

CONNECTORIZED MODEL: DSK-729S

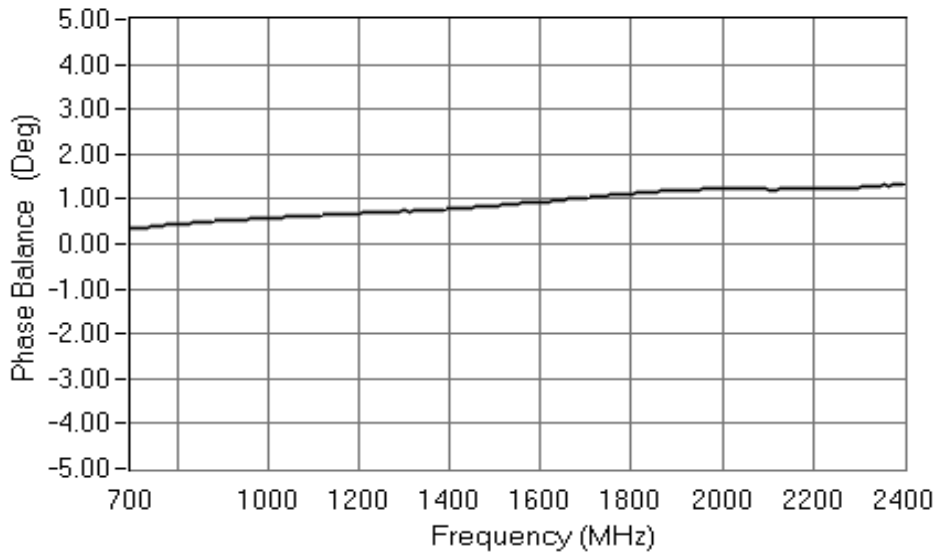
WIDE BANDWIDTH

800 - 2200 MHz

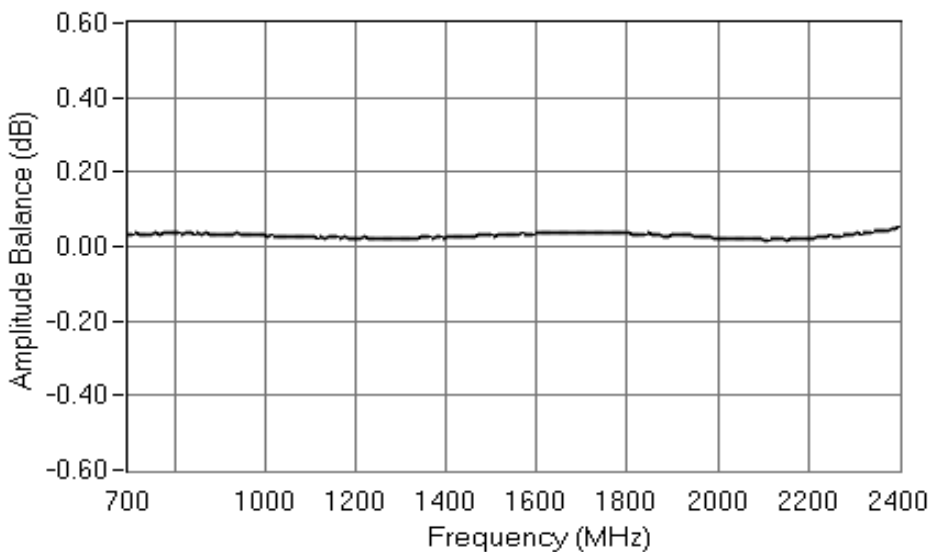
Data @ 25 °C

PERFORMANCE PLOTS

Phase Balance



Amplitude Balance



2-WAY POWER DIVIDER

CONNECTORIZED MODEL: DSK-729S

WIDE BANDWIDTH

800 - 2200 MHz

Data @ 25 °C

PERFORMANCE PLOTS

