

2-WAY POWER DIVIDER

SURFACE MOUNT MODEL: SDL-5

OPTIMIZED BANDWIDTH

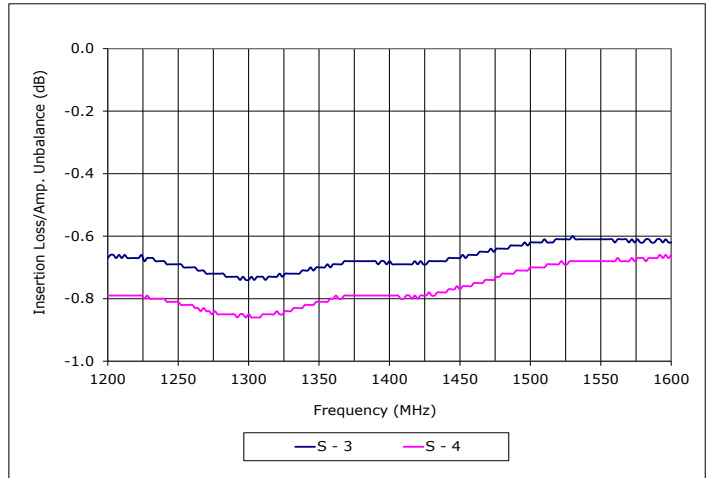
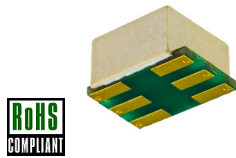
1200 - 1600 MHz

FEATURES:

- ▶ Excellent Performance
- ▶ Small Size, Surface Mount
- ▶ REL-PRO® Patented Technology
- ▶ Lead Free RoHS Compliant

APPLICATIONS:

- ▶ Signal Splitting & Low Power Combining



SPECIFICATIONS (Rev. C 09/18/18)

Frequency	1200 - 1600 MHz	
Insertion Loss (dB) ¹	Typ.	Max.
	0.8	1.5
Isolation (dB)	Typ.	Min.
	22	16
Phase Unbalance (Deg.)	Typ.	Max.
	3.0	4.0
Amplitude Unbalance	Typ.	Max.
	0.2	0.3
VSWR	1.5:1 (Typ.)	
Input Power	1 Watt (Max.)	
Impedance	50 Ohms (Nom.)	
Operating Temperature Range	-40 to +85 °C	

¹ Excludes 3.0 dB theoretical splitt loss.

Package # 159LF

REL-PRO® PATENT NO. 7,612,296

TOLERANCES ON THREE DECIMAL PLACES = ± 0.015
 PACKAGE MONTING: SEE APPLICATION NOTES AN7200 & AN7301

Port Configuration		
Input	Output	Ext. GND
6	3,4	1,2,5

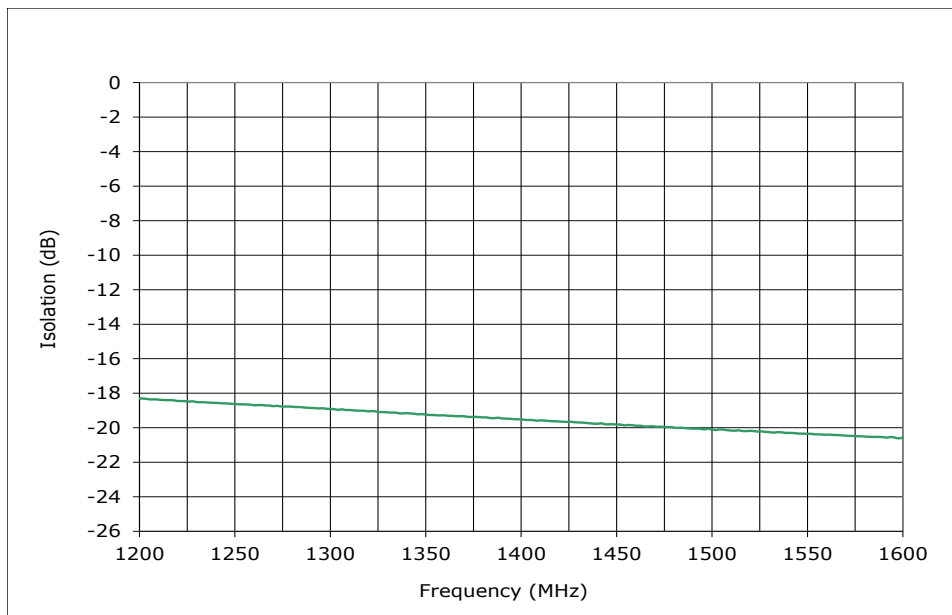
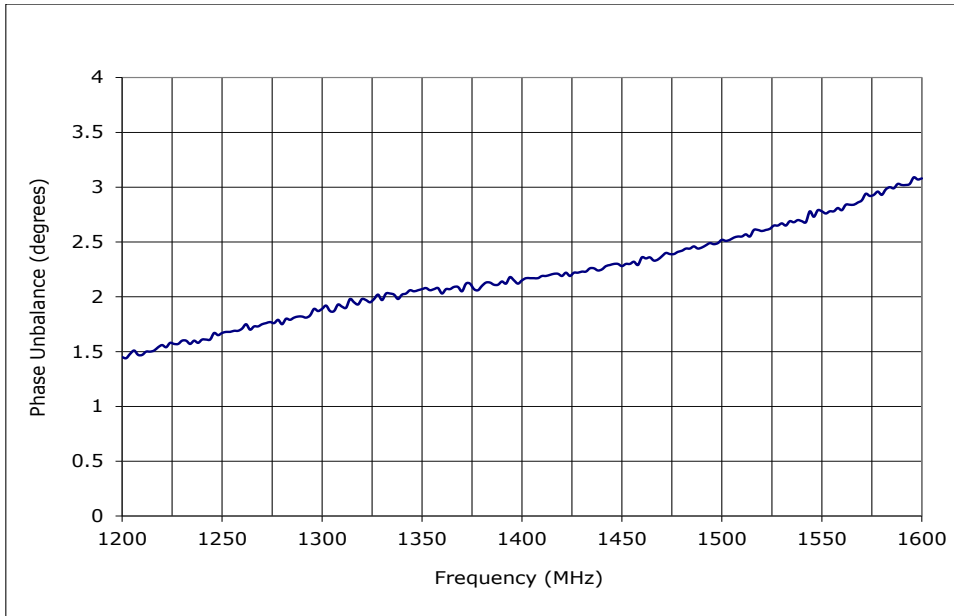
2-WAY POWER DIVIDER

SURFACE MOUNT MODEL: SDL-5

OPTIMIZED BANDWIDTH

1200 - 1600 MHz

PERFORMANCE PLOTS

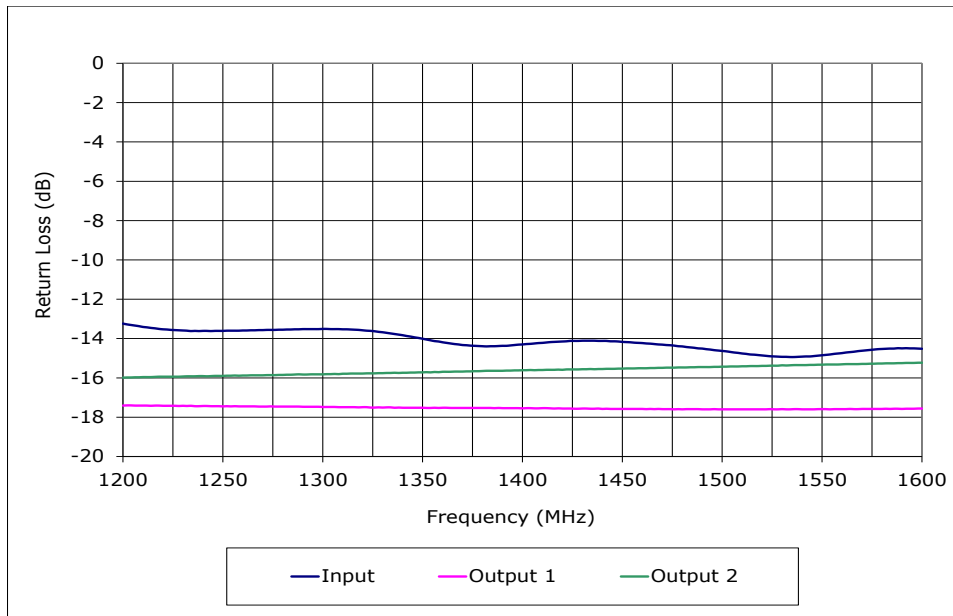


2-WAY POWER DIVIDER

SURFACE MOUNT MODEL: SDL-5

OPTIMIZED BANDWIDTH

1200 - 1600 MHz



PERFORMANCE PLOTS