

# 4-WAY POWER DIVIDER

## SURFACE MOUNT MODEL: SPD-69-270

**WIDE BANDWIDTH**

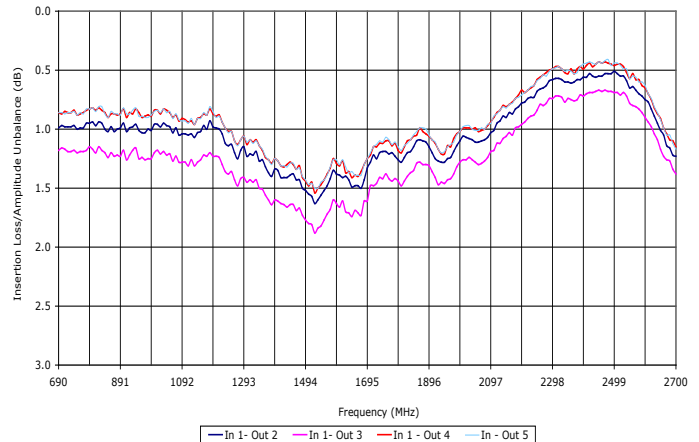
**690 - 2700 MHz**

**FEATURES:**

- ▶ Excellent Performance
- ▶ Small Size, Surface Mount
- ▶ Moderate Power
- ▶ Lead Free RoHS Compliant

**APPLICATIONS:**

- ▶ Signal Splitting & Low Power Combining



**SPECIFICATIONS (Rev. B 02/13/12)**

Frequency	690 - 2700 MHz	
Insertion Loss (dB) <sup>1</sup>	Typ.	Max.
	2.3	2.7
Isolation (dB)	Typ.	Min.
	18	12
Phase Unbalance (Deg.)	Typ.	Max.
	5.0	12.0
Amplitude Unbalance (dB)	Typ.	Max.
	0.6	1.0
VSWR	1.8:1 (Typ.)	
Input Power <sup>2</sup>	1 Watt (Max.)	
Impedance	50 Ohms (Nom.)	
Operating Temperature Range	-40 to +85 °C	

<sup>1</sup> Insertion loss is above the theoretical 6.0 dB splitting loss.  
<sup>2</sup> Handling power applies to splitter mode and assumes ideal 50 Ohms impedance matching on all ports.

**Package #** 219

**PIN OUTS**  
 PIN 1 : INPUT  
 PIN 2,3,4&5 : OUTPUTS  
 ALL OTHER PINS GND

HATCHED AREA IS MASKING  
 BOTTOM MASKING

RECOMMENDED PCB LAYOUT

PACKAGE MOUNTING SEE APPLICATION NOTE AN7301

Port Configuration		
Input	Output	GND.
1	2,3,4,5	All Others



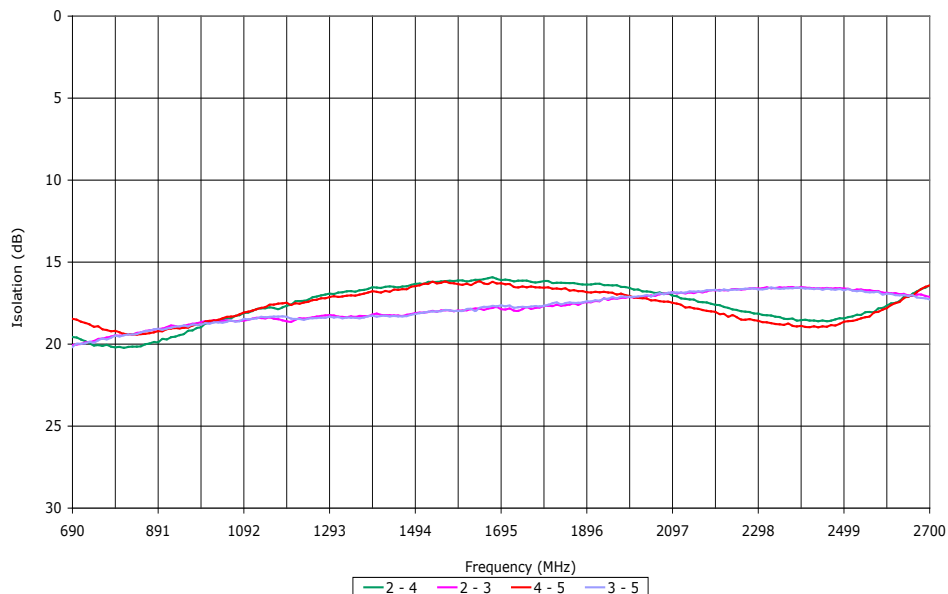
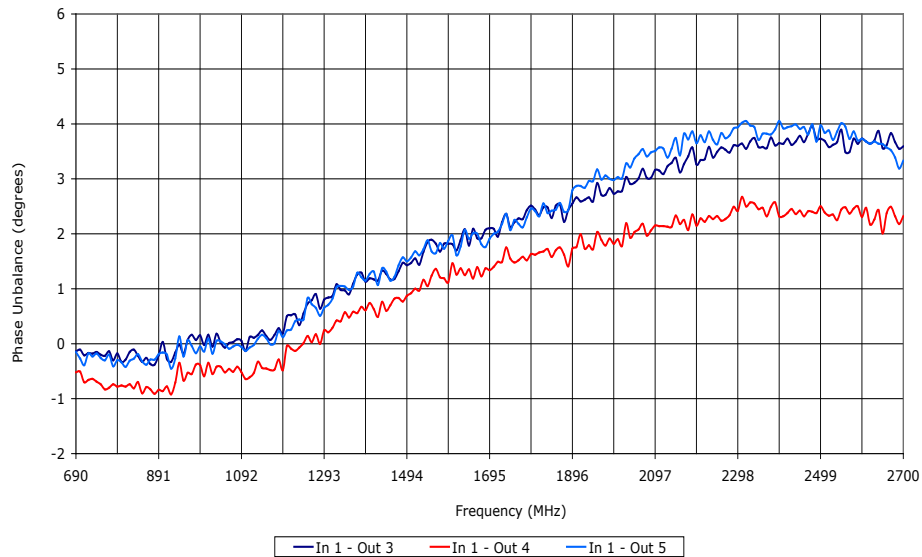
# 4-WAY POWER DIVIDER

## SURFACE MOUNT MODEL: SPD-69-270

WIDE BANDWIDTH

690 - 2700 MHz

Data @ 25 °C



PERFORMANCE PLOTS

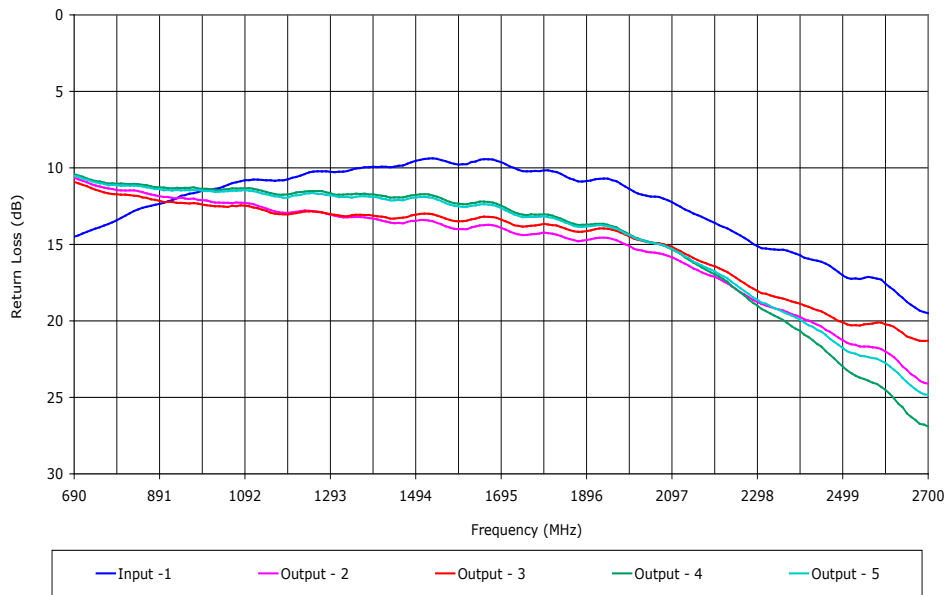
# 4-WAY POWER DIVIDER

## SURFACE MOUNT MODEL: SPD-69-270

WIDE BANDWIDTH

690 - 2700 MHz

Data @ 25 °C



PERFORMANCE PLOTS