

VOLTAGE CONTROLLED OSCILLATOR

SURFACE MOUNT MODEL: DCO2000-5

OPTIMIZED BANDWIDTH

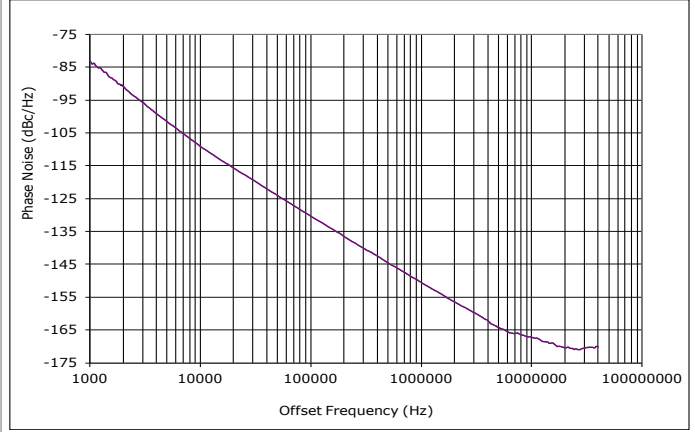
2000 MHz

FEATURES:

- ▶ Miniature Size, Surface Mount (0.3" x 0.3")
- ▶ Exceptional Phase Noise Performance
- ▶ Fast Tuning
- ▶ Planar Resonator Construction
- ▶ Lead Free Patented REL-PRO® Technology



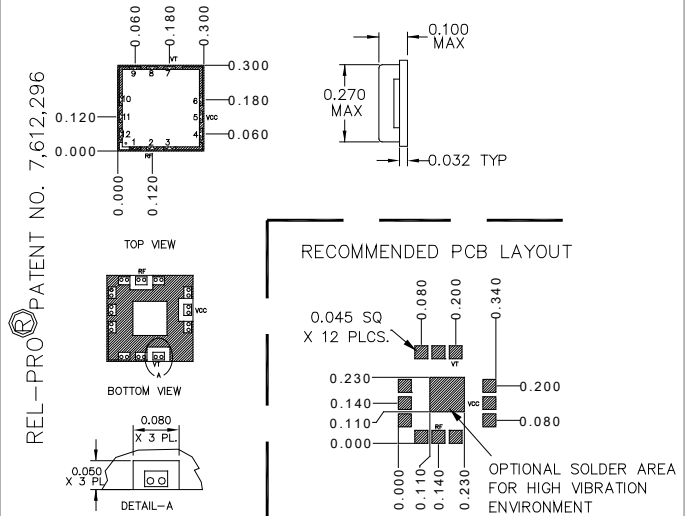
Phase Noise



SPECIFICATIONS (Rev. C 03/04/20)

Frequency	2000 MHz	
Tuning Voltage	0.5 - 4.5 V	
Bias Voltage	+4.5 VDC @ 32 mA (Max.)	
Output Power	+5 dBm (Min.)	
Tuning Sensitivity	15 - 20 MHz/V (Typ.)	
Output Impedance	50 Ohms (Nom.)	
Harmonic Suppression	17 dB (Typ.)	
Frequency Pulling	1 MHz (Typ. @ 1.75:1 VSWR)	
Frequency Pushing	1 MHz/V (Typ.)	
Tuning Port Capacitance	47 pF (Typ.)	
Typical Phase Noise	Offset	dBc/Hz
	10 kHz	-110
	100 kHz	-130
Operating Temperature Range	-40 to +85 °C	

Package # 364LF



PACKAGE MOUNTING: SEE APPLICATION NOTE AN7200 AND AN7302
 TOLERANCES ON THREE DECIMAL PLACES= ± 0.015
 DIMENSIONS ARE IN INCHES.
 ALL UNLABELED PINS TO BE GROUND.

Absolute Maximum Ratings

Storage Temp. Range	-55 to +125 °C
Bias Voltage	+5.5 V
Tuning Voltage	+15 V
DC Voltage Applied to RF Out	± 25 V

Copyright © Synergy Microwave Corporation
 201 McLean Boulevard • Paterson, New Jersey 07504 USA
 Tel: (973) 881-8800 • Fax: (973) 881-8361
 E-Mail: sales@synergymwave.com • Website: http://www.synergymwave.com
 Patents : http://www.synergymwave.com/patents



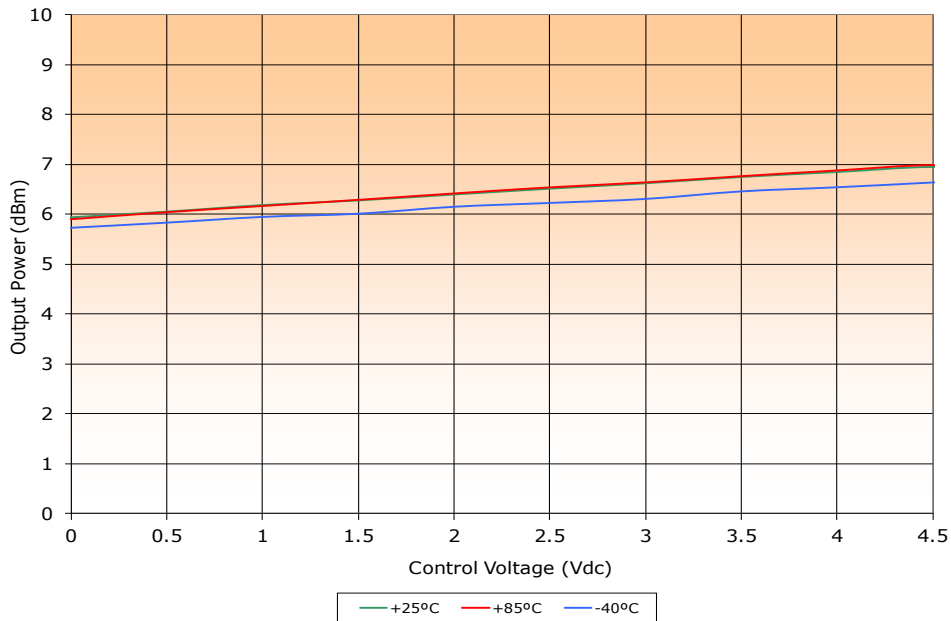
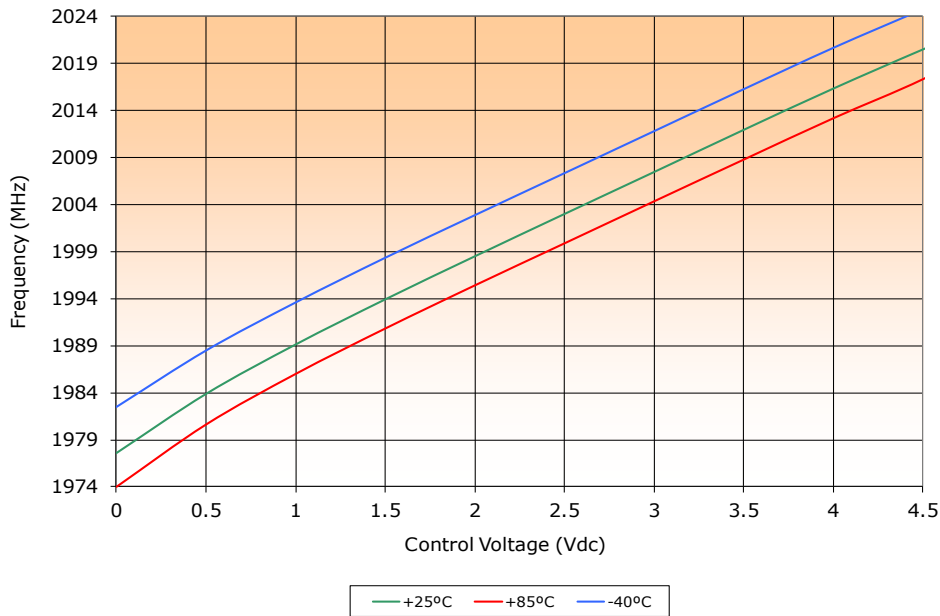
VOLTAGE CONTROLLED OSCILLATOR

SURFACE MOUNT MODEL: DCO2000-5

OPTIMIZED BANDWIDTH

2000 MHz

PERFORMANCE PLOTS



VOLTAGE CONTROLLED OSCILLATOR SURFACE MOUNT MODEL: DCO2000-5

OPTIMIZED BANDWIDTH

2000 MHz

PERFORMANCE PLOTS

