

VOLTAGE CONTROLLED OSCILLATOR

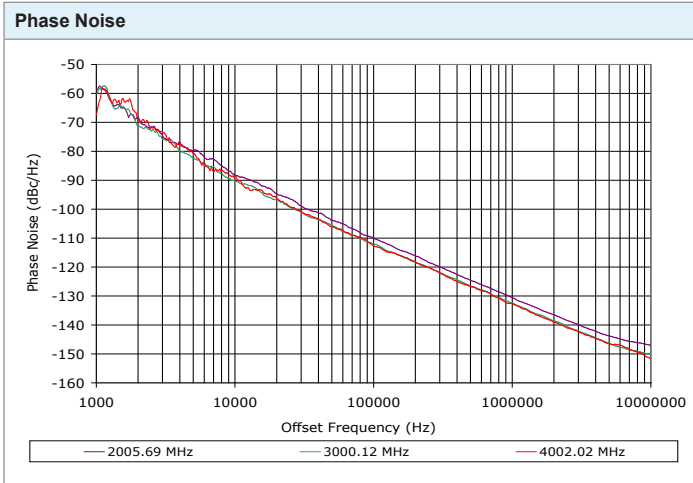
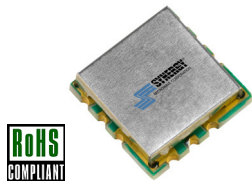
SURFACE MOUNT MODEL: DCO200400-5

OPTIMIZED BANDWIDTH

2000 - 4000 MHz

FEATURES:

- ▶ Miniature Size, Surface Mount (0.3" x 0.3")
- ▶ Exceptional Phase Noise Performance
- ▶ Fast Tuning
- ▶ Planar Resonator Construction



SPECIFICATIONS (Rev. B 01/09/14)

Frequency	2000 - 4000 MHz	
Tuning Voltage	0.5 - 18 V	
Bias Voltage	+5 VDC @ 46 mA (Max.)	
Output Power	-2 dBm (Min.)	
Tuning Sensitivity	120 - 270 MHz/V (Typ.)	
Output Impedance	50 Ohms (Nom.)	
Harmonic Suppression	12 dB (Typ.)	
Frequency Pulling	15 MHz (Typ. @ 1.75:1 VSWR)	
Frequency Pushing	8 MHz/V (Typ.)	
Tuning Port Capacitance	48 pF (Typ.)	
Typical Phase Noise	Offset	dBc/Hz
	10 kHz	-90
	100 kHz	-110
Operating Temperature Range	-40 to +85 °C	

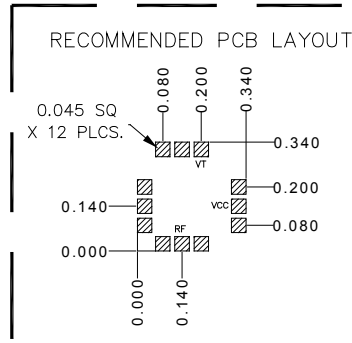
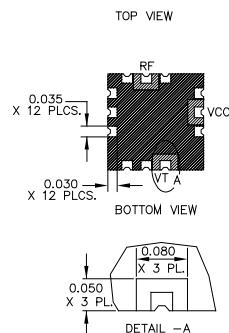
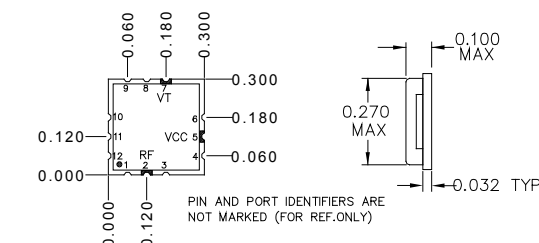
Guaranteed Tuning Specifications

Tuning Voltage (V)	Frequency (MHz)
0.5	2000 (Max.)
5	2500 (Min.)
8	2850 (Min.)
12	3250 (Min.)
18	4000 (Min.)

Absolute Maximum Ratings

Storage Temp. Range	-55 to +125 °C
Bias Voltage	+5.5 V
Tuning Voltage	+19 V
DC Voltage Applied to RF Out	± 25 V

Package # 343



PACKAGE MOUNTING: SEE APPLICATION NOTE AN7300 & AN7302

TOLERANCES ON THREE DECIMAL PLACES= ± 0.015
 DIMENSIONS ARE IN INCHES.
 ALL UNLABELED PINS TO BE GROUND.

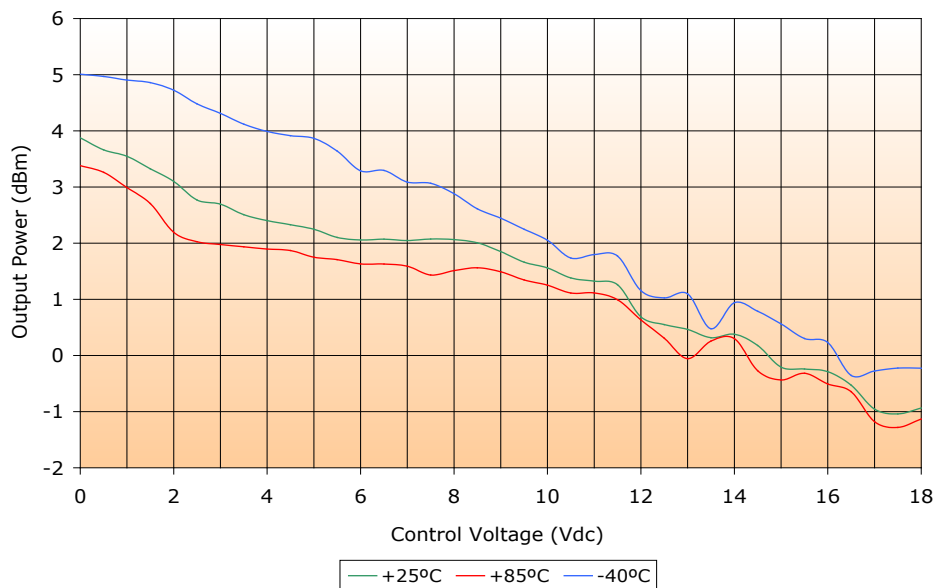
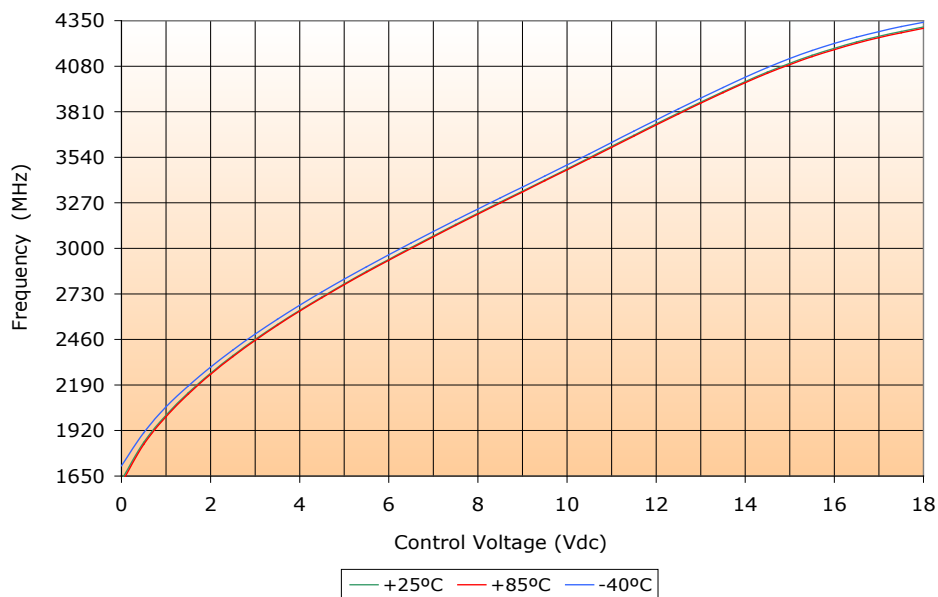
VOLTAGE CONTROLLED OSCILLATOR

SURFACE MOUNT MODEL: DCO200400-5

OPTIMIZED BANDWIDTH

2000 - 4000 MHz

PERFORMANCE PLOTS



VOLTAGE CONTROLLED OSCILLATOR

SURFACE MOUNT MODEL: DCO200400-5

OPTIMIZED BANDWIDTH

2000 - 4000 MHz

PERFORMANCE PLOTS

