

VOLTAGE CONTROLLED OSCILLATOR

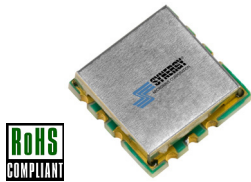
SURFACE MOUNT MODEL: DCO432493-3

OPTIMIZED BANDWIDTH

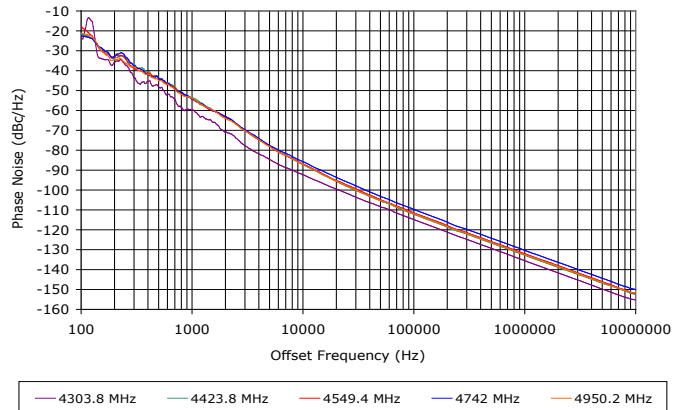
4325 - 4950 MHz

FEATURES:

- ▶ Miniature Size, Surface Mount (0.3" x 0.3")
- ▶ Exceptional Phase Noise Performance
- ▶ Fast Tuning
- ▶ Planar Resonator Construction



Phase Noise



SPECIFICATIONS (Rev. B 01/09/14)

Frequency	4325 - 4950 MHz	
Tuning Voltage	See table below.	
Bias Voltage	+3 VDC @ 22 mA (Max.)	
Output Power	-2 dBm (Min.)	
Tuning Sensitivity	40 - 130 MHz/V (Typ.)	
Output Impedance	50 Ohms (Nom.)	
Harmonic Suppression	18 dB (Typ.)	
Frequency Pulling	10 MHz (Typ. @ 1.75:1 VSWR)	
Frequency Pushing	8 MHz/V (Typ.)	
Tuning Port Capacitance	42 pF (Typ.)	
Typical Phase Noise	Offset	dBc/Hz
	10 kHz	-87
	100 kHz	-112
Operating Temperature Range	-40 to +85 °C	

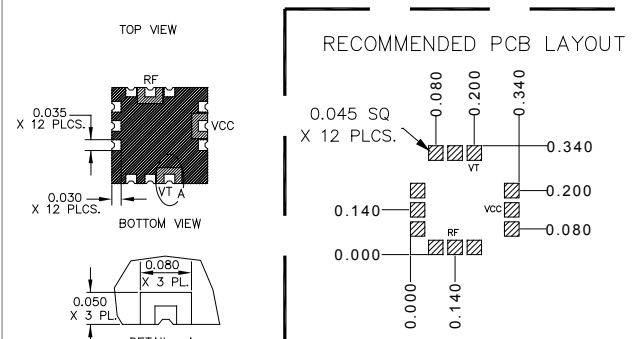
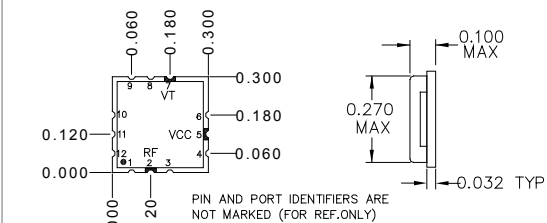
Guaranteed Tuning Specifications

Tuning Voltage (V)	Frequency (MHz)
0.5	4325 (Max.)
5	4550 (Min.)
8	4750 (Min.)
11	4950 (Min.)

Absolute Maximum Ratings

Storage Temp. Range	-55 to +125 °C
Bias Voltage	+3.3 V
Tuning Voltage	+15 V
DC Voltage Applied to RF Out	±25 V

Package # 343



PACKAGE MOUNTING: SEE APPLICATION NOTE AN7300 & AN7302

TOLERANCES ON THREE DECIMAL PLACES= ± 0.015

DIMENSIONS ARE IN INCHES. ALL UNLABELED PINS TO BE GROUND.

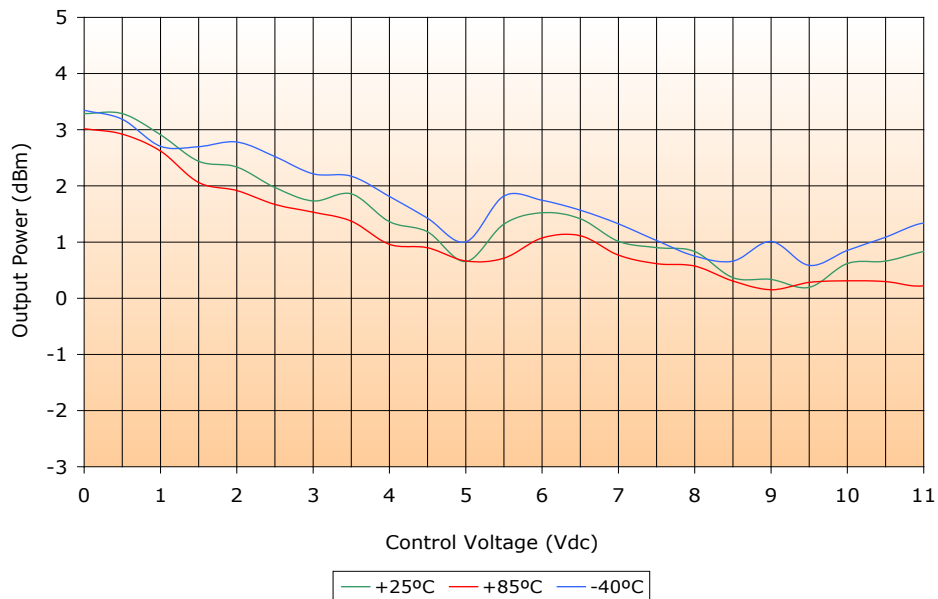
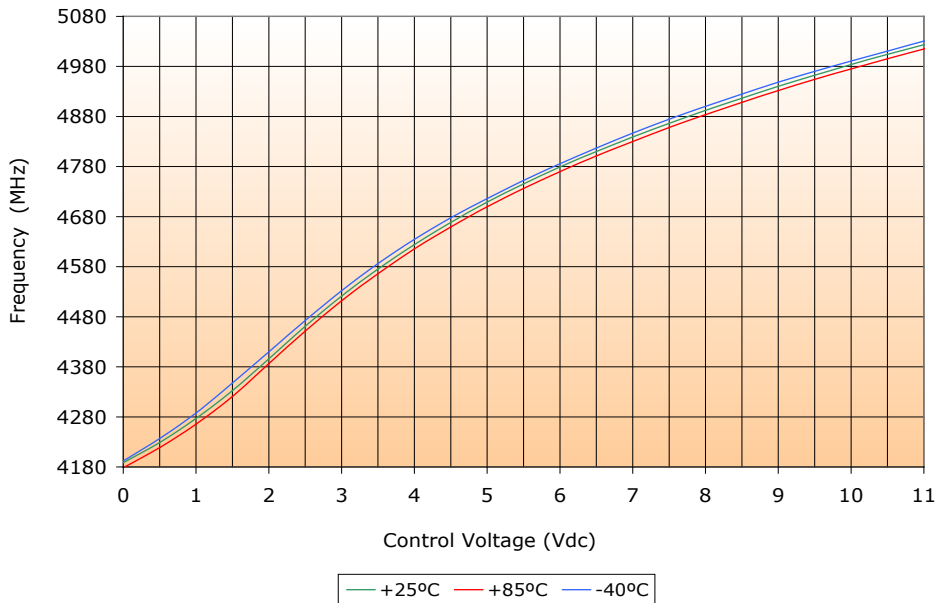
VOLTAGE CONTROLLED OSCILLATOR

SURFACE MOUNT MODEL: DCO432493-3

OPTIMIZED BANDWIDTH

4325 - 4950 MHz

PERFORMANCE PLOTS



VOLTAGE CONTROLLED OSCILLATOR

SURFACE MOUNT MODEL: DCO432493-3

OPTIMIZED BANDWIDTH

4325 - 4950 MHz

PERFORMANCE PLOTS

