

VOLTAGE CONTROLLED OSCILLATOR

SURFACE MOUNT MODEL: DCO8190-5

OPTIMIZED BANDWIDTH

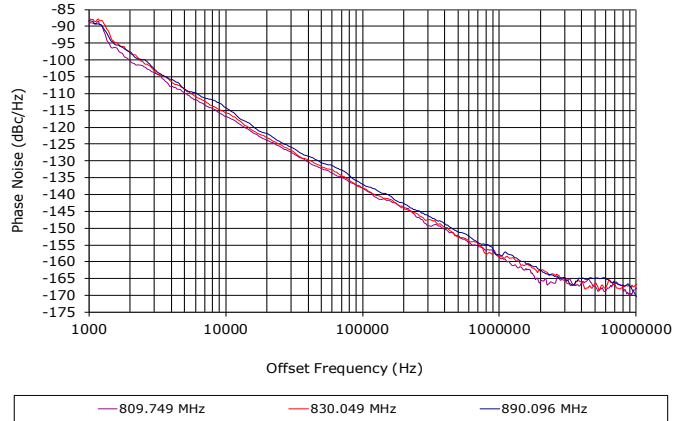
810 - 900 MHz

FEATURES:

- ▶ Miniature Size, Surface Mount (0.3" x 0.3")
- ▶ Exceptional Phase Noise Performance
- ▶ Fast Tuning
- ▶ Planar Resonator Construction
- ▶ Lead Free Patented REL-PRO® Technology



Phase Noise



SPECIFICATIONS (Rev. F 06/04/15)

Frequency	810 - 900 MHz	
Tuning Voltage	See table below.	
Bias Voltage	+5 VDC @ 34 mA (Max.)	
Output Power	+1 dBm (Min.)	
Tuning Sensitivity	4.5 - 9.0 MHz/V (Typ.)	
Output Impedance	50 Ohms (Nom.)	
Harmonic Suppression	17 dB (Typ.)	
Frequency Pulling	2 MHz (Typ. @ 1.75:1 VSWR)	
Frequency Pushing	1.5 MHz/V (Typ.)	
Tuning Port Capacitance	136 pF (Typ.)	
Typical Phase Noise	Offset	dBc/Hz
	10 kHz	-115
	100 kHz	-135
Operating Temperature Range	-40 to +85 °C	

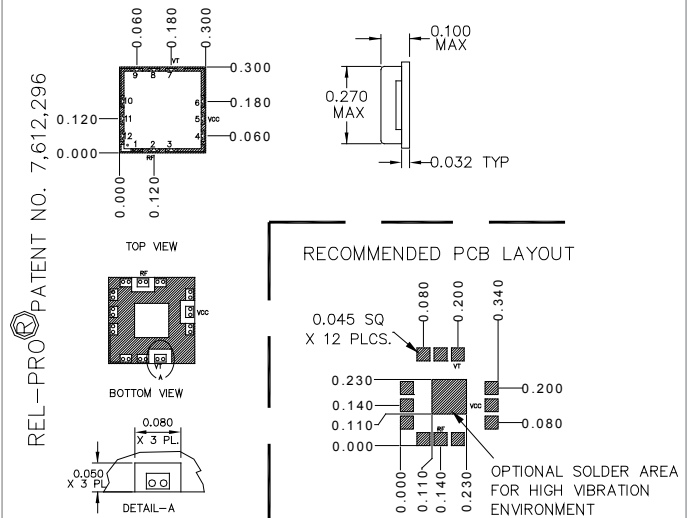
Guaranteed Tuning Specifications

Tuning Voltage (V)	Frequency (MHz)
0.5	810 (Max.)
5	820 (Min.)
8	840 (Min.)
12	875 (Min.)
16	900 (Min.)

Absolute Maximum Ratings

Storage Temp. Range	-55 to +125 °C
Bias Voltage	+5.50 V
Tuning Voltage	+25 V
DC Voltage Applied to RF Out	±25 V

Package # 343LF



PACKAGE MOUNTING: SEE APPLICATION NOTE AN7200 AND AN7302
 TOLERANCES ON THREE DECIMAL PLACES= ± 0.015
 DIMENSIONS ARE IN INCHES.
 ALL UNLABELED PINS TO BE GROUNDING.

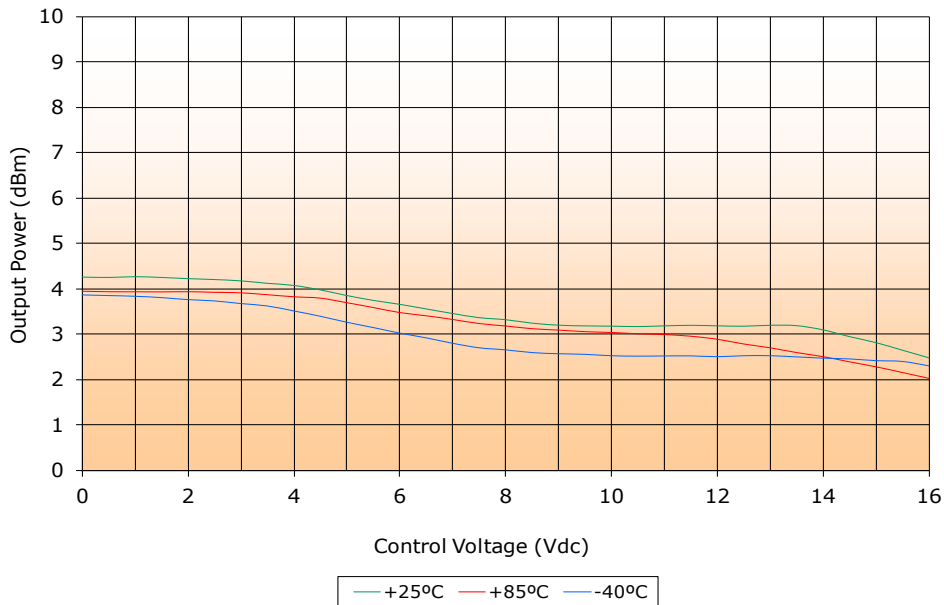
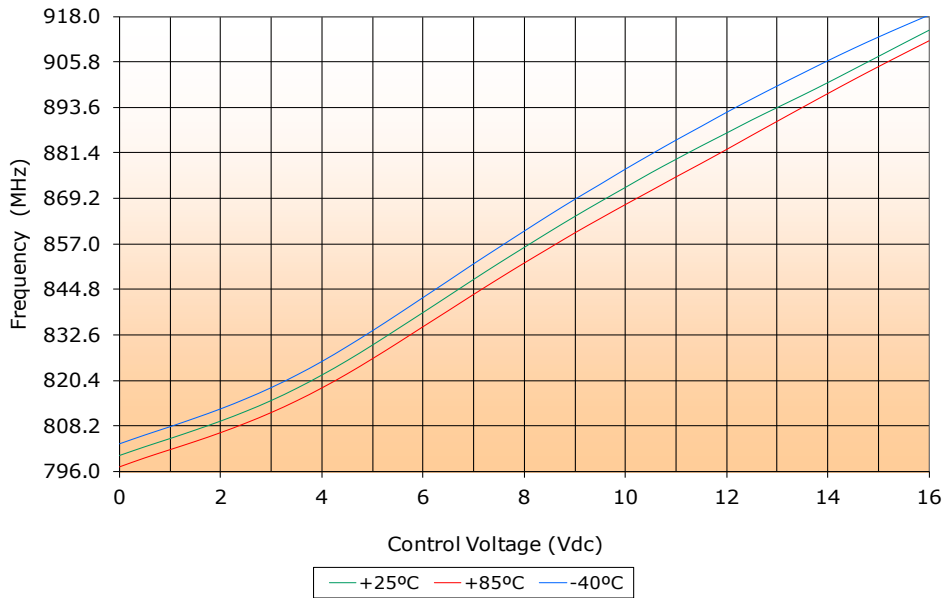
VOLTAGE CONTROLLED OSCILLATOR

SURFACE MOUNT MODEL: DCO8190-5

OPTIMIZED BANDWIDTH

810 - 900 MHz

PERFORMANCE PLOTS



VOLTAGE CONTROLLED OSCILLATOR

SURFACE MOUNT MODEL: DCO8190-5

OPTIMIZED BANDWIDTH

810 - 900 MHz

PERFORMANCE PLOTS

