

# VOLTAGE CONTROLLED OSCILLATOR

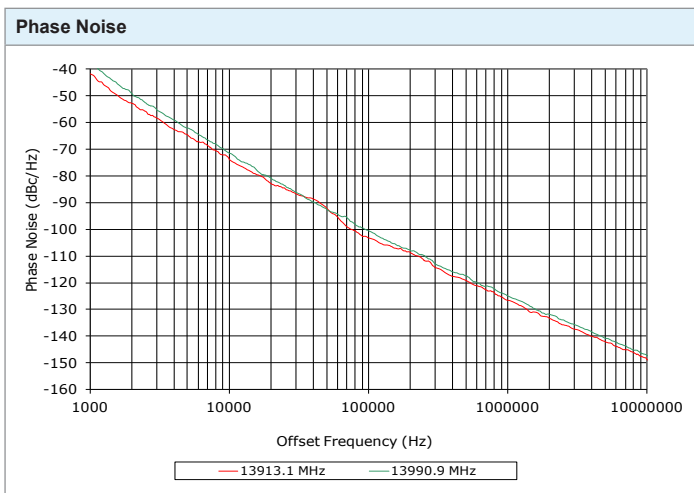
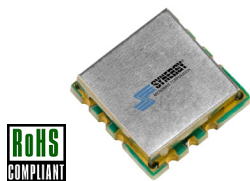
## SURFACE MOUNT MODEL: DXO13901400-5

**Ku-BAND OPTIMIZED BANDWIDTH**

**13900 - 14000 MHz**

**FEATURES:**

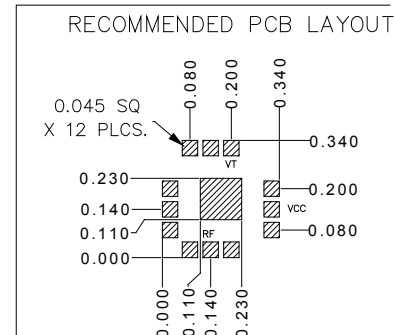
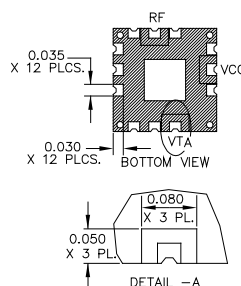
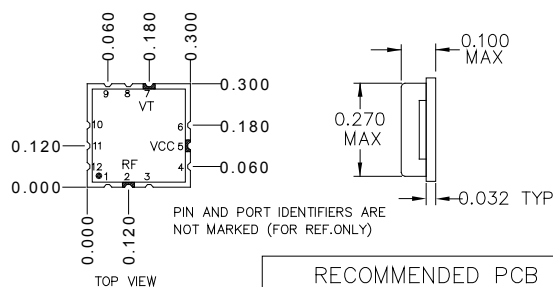
- ▶ Miniature Size, Surface Mount (0.3" x 0.3")
- ▶ Low Phase Noise Performance
- ▶ Fast Tuning
- ▶ Planar Resonator Construction



**SPECIFICATIONS (Rev B 04/18/14)**

Frequency	13900 - 14000 MHz
Tuning Voltage	See table below.
Bias Voltage	+5 VDC @ 22 mA (Max.)
Output Power	0 dBm (Min.)
Tuning Sensitivity	60 - 90 MHz/V (Typ.)
Output Impedance	50 Ohms (Nom.)
Harmonic Suppression	30 dB (Typ.)
Frequency Pulling	40 MHz (Typ. @ 1.75:1 VSWR)
Frequency Pushing	18 MHz/V (Typ.)
Tuning Port Capacitance	2.2 pF (Typ.)
Phase Noise @ 10 kHz	-72 dBc/Hz (Typ.)
Operating Temperature Range	-40 to +85 °C

**Package #** 364



DIMENSIONS ARE IN INCHES.  
 TOLERANCES ON THREE DECIMAL PLACES = ± 0.015  
 ALL UNLABELED PINS TO BE GROUNDED.  
 PACKAGE MOUNTING: SEE APPLICATION NOTE AN7300 & AN7302

**Guaranteed Tuning Specifications**

Tuning Voltage ( V )	Frequency ( MHz )
0.5	13900 (Max.)
8	14000 (Min.)

**Absolute Maximum Ratings**

Storage Temp. Range	-55 to +125 °C
Bias Voltage	+5.5 V
Tuning Voltage	+12V
DC Voltage Applied to RF Out	± 25 V

**Patent :** <http://www.synergymwave.com/patents>

Copyright © Synergy Microwave Corporation  
 201 McLean Boulevard • Paterson, New Jersey 07504 USA  
 Tel: (973) 881-8800 • Fax: (973) 881-8361  
 E-Mail: [sales@synergymwave.com](mailto:sales@synergymwave.com) • Website: <http://www.synergymwave.com>  
 Patents : <http://www.synergymwave.com/patents>



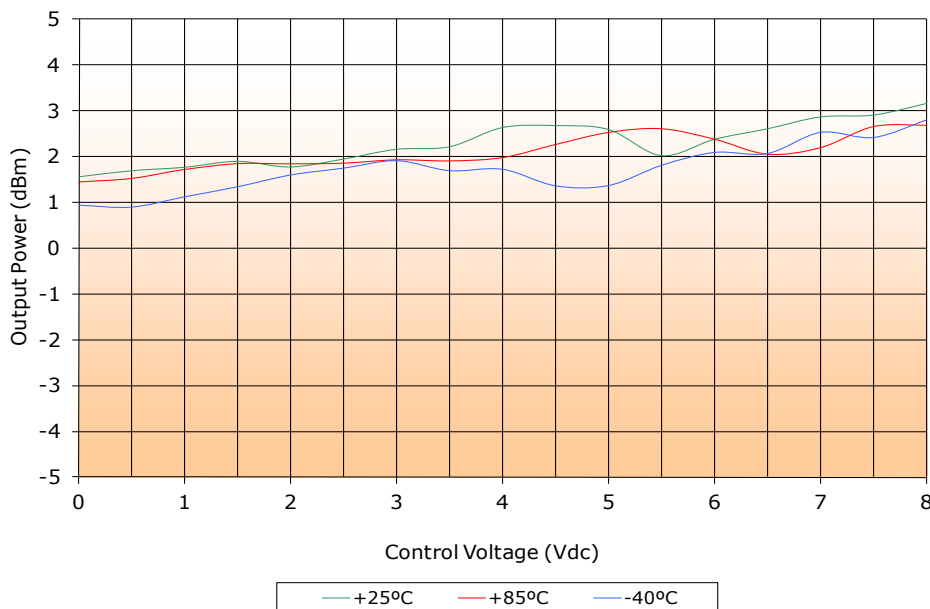
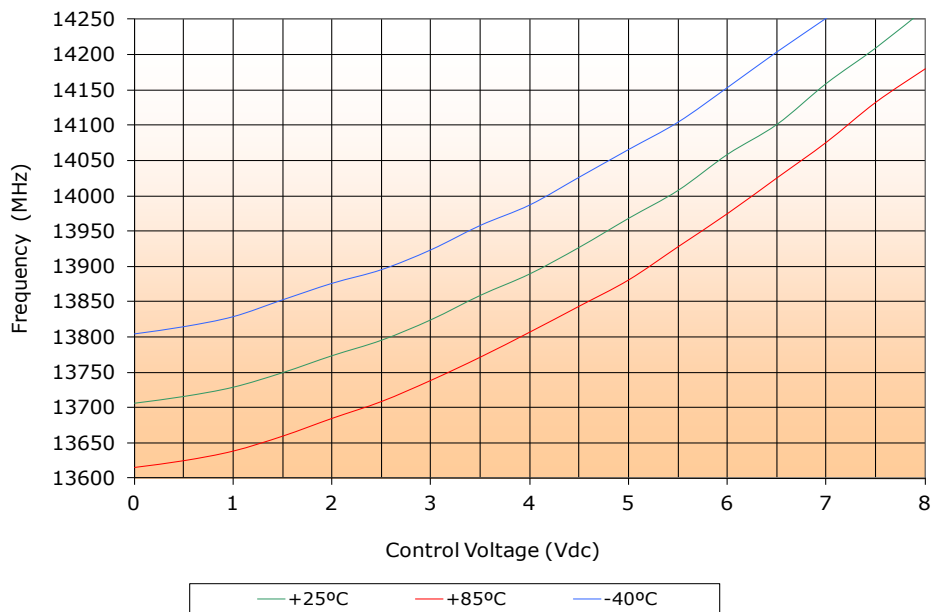
# VOLTAGE CONTROLLED OSCILLATOR

## SURFACE MOUNT MODEL: DXO13901400-5

Ku-BAND OPTIMIZED BANDWIDTH

13900 - 14000 MHz

PERFORMANCE PLOTS



# VOLTAGE CONTROLLED OSCILLATOR

## SURFACE MOUNT MODEL: DXO13901400-5

Ku-BAND OPTIMIZED BANDWIDTH

13900 - 14000 MHz

PERFORMANCE PLOTS

